

MAN

insider

MILWAUKEE ART MUSEUM

MEMBER MAGAZINE | WINTER 2011/12

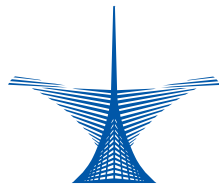
Accidental Genius

Opens Feb 10

Impressionism

Closes Jan 8





on view

- 4** ACCIDENTAL GENIUS
Opens Feb 10
- 8** IMPRESSIONISM
Closes Jan 8
- 10** THE TOOL AT HAND
Opens Dec 8
- 12** SCHOLASTIC
Opens Feb 4
- 13** BUILDING A MASTERPIECE
TARYN SIMON
Closes Jan 1
- 14** FROM THE COLLECTION

profiles

- 15** TERRI AND VERNE HOLOUBEK
- 16** KAREN AND MATTHEW BALLMAN

happenings

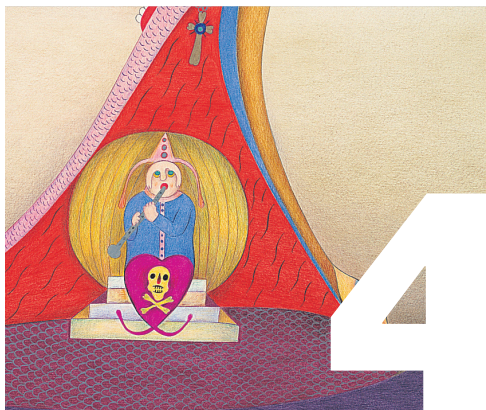
- 17** LEARN + PLAY
- 18** KOHL'S ART GENERATION
- 20** HOLIDAY HAPPENINGS
- 21** OTHER EVENTS
- 22** IMPRESSIONISM
OPENING PHOTOS
- 24** MAM AFTER DARK
- 25** RENTALS
- 26** MUSEUM STORE

Admission

All programs and events are free for Members
(or with Museum admission for non-members)
unless otherwise noted.



Photography courtesy Front Room
Photography unless otherwise noted.



FRONT COVER James Lloyd, *Among the Grasses* (Susanna York), n.d.
(detail). The Anthony Petullo Collection. Photo by John R. Glembin.

Director's Letter

Happy holidays from the Milwaukee Art Museum! I am delighted to see our visitors continuing to take full advantage of the unique breadth of experiences afforded through the exhibitions *Impressionism: Masterworks on Paper*, *Building a Masterpiece: Santiago Calatrava and the Milwaukee Art Museum*, and *Taryn Simon: Photographs and Texts*. The depth of each has proven to warrant repeat visits!

As is the custom this time of year, we at the Museum want to take note of the things for which we are grateful. On behalf of the staff and the Board of Directors, thank you for your continued support. Without you, we would not be able to organize and present these exhibitions, two of which will carry the Milwaukee Art Museum name as they travel abroad. Because of you, our biggest cheerleaders, we have the international spotlight on us here at home. In the past year, over 370,000 people came to the Museum, including near-record attendance for both *Frank Lloyd Wright* and the *Summer of CHINA*.

The Museum is fortunate to have so many devoted donors and volunteers—and we want to encourage others to realize and reap the benefits of supporting their Museum. By giving generously of your time, talents, and dollars throughout the year, you set the example for others and keep the Museum a world-class destination. Gifts of Museum memberships are another great way to share the riches of art, and the Museum Store has a variety of one-of-a-kind gifts for your loved ones of all ages. Come visit us over the holidays, watch for Members-only specials, and celebrate the joy of the season with family and friends at the Museum.

I look forward to celebrating in 2012 with you, including the extraordinary gift that gave rise to the exhibition opening in February, *Accidental Genius: Art from the Anthony Petullo Collection*. It's going to be another exciting year!

Regards,

Dan Keegan
Director



Dan Keegan, director



Minnie Evans, *Untitled, 1960/1963/1966 (detail)*. The Anthony Petullo Collection. Photo by Larry Sanders. Anthony Petullo Portrait by Tom Bamberger.

on view | ACCIDENTAL GENIUS
opening | FEB 10–MAY 6, 2012 | BAKER/ROWLAND GALLERIES

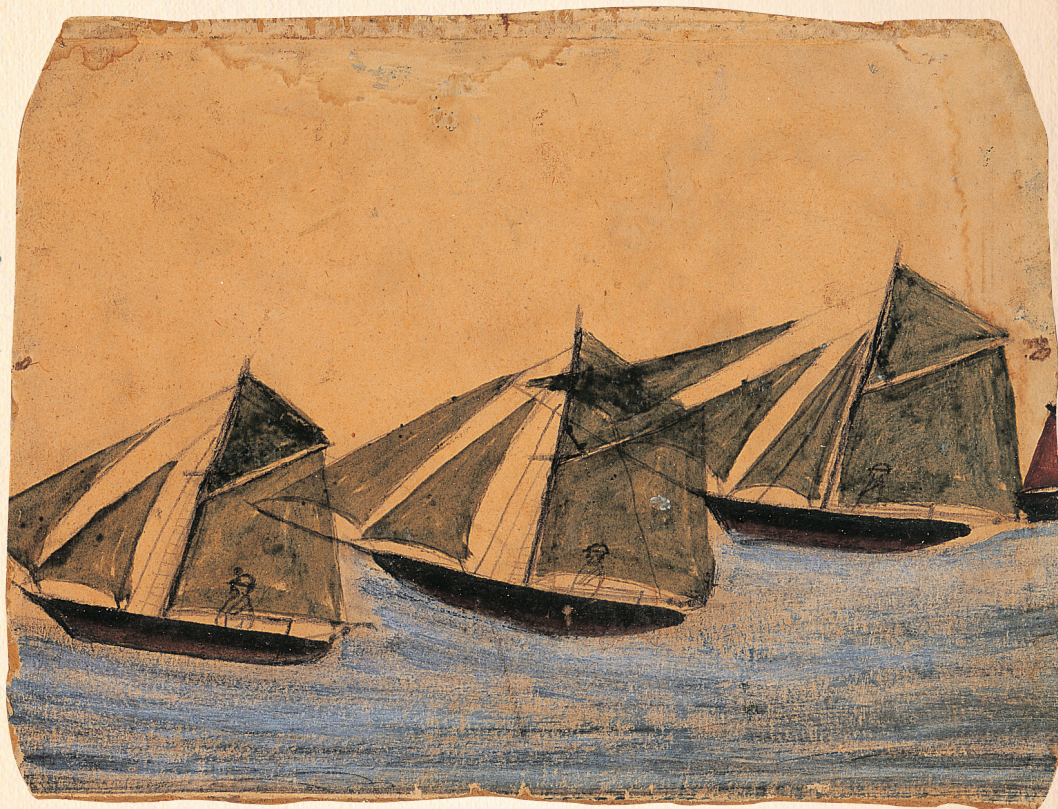
Accidental Genius: Art from the Anthony Petullo Collection



This exhibition celebrates the gift to the Museum of the Anthony Petullo Collection, with the most extensive grouping of European self-taught art in America. Comprising more than three hundred artworks, the gift greatly enhances the Museum's holdings and establishes the Milwaukee Art Museum as a leading American institution for self-taught art. *Accidental Genius* will feature more than 175 works by many of the most important European and American artists in the genre, including Henry

Darger, Minnie Evans, Martín Ramírez, Friedrich Schröder-Sonnenstern, Bill Traylor, Alfred Wallis, Adolf Wölfli, and Anna Zemankova.

Self-taught artists typically explore and develop their skills independently, rather than within an academic setting or by adhering to any established artistic movements. Several artists in the Petullo Collection are represented in great depth, allowing for a comprehensive examination of their work. British artist Scottie Wilson (1891–1972) started doodling on a tabletop in the back room of the shop he owned; he quit the business to devote all his time to his art, which included making tableware designs for the Royal Worcester Porcelain Company. Examples of both his drawings and his ceramics are included in the exhibition. Swiss artist Rosemarie Koczy (1939–2007), imprisoned with her family in a Nazi concentration camp during World War II, was driven by her experiences to create work in which the figures are barely able to emerge from their densely hatched backgrounds. Rural Texas native Eddie Arning (1898–1993) discovered his artistic ability later in life through an art class offered at his nursing home; magazine illustrations served as source material for his pastel drawings.



Some of the lesser known but equally significant artists collected by Petullo include English laborer James Lloyd (1905–1974), who developed a pointillist painting technique after studying the dot patterns associated with printed reproductions of famous artworks. Italian draftsman Domenico Zindato (b. 1966) is also represented, with his labor-intensive, meticulously detailed drawings.

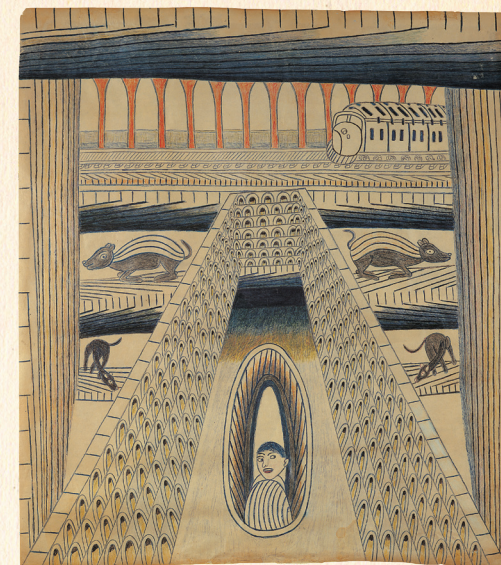
The Museum's commitment to the work of self-taught artists began as early as 1951 with the gift of two paintings by Wisconsin artist Anna Louisa Miller. Other important works entered the collection over the following three decades, culminating in the 1989 acquisition of the Michael and

Julie Hall Collection of American Folk Art. With the acquisition of the world-class Petullo Collection, the Museum's holdings now encompass a more broadly inclusive representation of self-taught art as a worldwide phenomenon.

This exhibition is generously supported by Leslie Hindman, Inc., Donald and Donna Baumgartner, and the Einhorn Family Foundation.

CLOCKWISE FROM TOP

Alfred Wallis, *Green Sails*, ca. 1939.
 Friedrich Schröder-Sonnenstern, *The King of the Sniffles* (*Der Schnupfknönig*), 1958.
 Martín Ramírez, *Courtyard*, 1954.
 Henry Darger, *Blengiglomeneans Displaying Their Wings* (recto) [shown]; *Images of Men Strangling Children* (verso), n.d. (detail).
 The Anthony Petullo Collection. Photos by Larry Sanders.



Programs + Events

For a complete listing of programs and events through May, visit www.mam.org.

Members Always See It First

President's Circle Preview Party
 Wed, Feb 8, 5:30–8 PM

12-Hour Member Preview Celebration

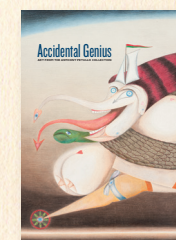
Thurs, Feb 9, 10 AM–10 PM
 Docent-led tours and free audio guides
 Lectures*: 1:30 and 6:15 PM
 (book signing after each)
 Appetizers/cash bar, beginning at 5 p.m.
 Non-members may join the celebration at 5 p.m. for \$25.

*Lectures are ticketed. Tickets are first-come, first served, beginning at 10 a.m.

Opening Day Exhibition Talk
 Fri, Feb 10, 1:30 PM

Express Talks
 Thurs, Feb 16 and 23, NOON

Gallery Talk
 Tues, Feb 14, 1:30 PM

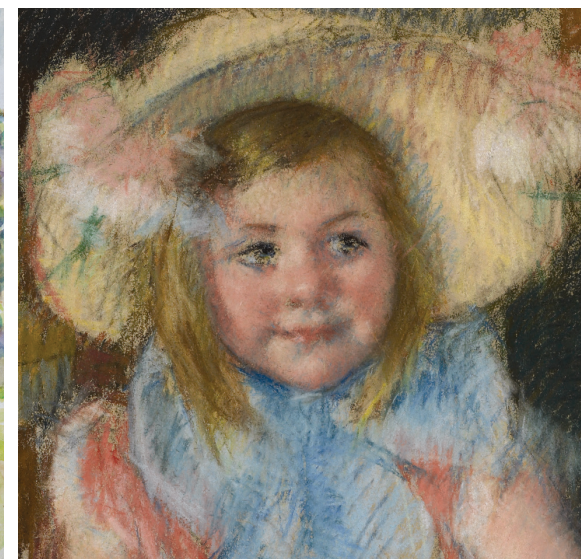


Catalogue
 Available in the
 Museum Store and at
mam.org/store
 Softcover \$39.95/\$36.96 Member
 Hardcover \$60/\$54 Member



"Yields treasure after treasure"

—THIRD COAST DIGEST



LEFT TO RIGHT Edgar Degas, *Conversation at the Racetrack*, 1882/85 (detail). Gift of Mr. Harry Lynde Bradley. Photo by Larry Sanders. Camille Pissarro, *The Orchard at Eragny-sur-Epte*, ca. 1890 (detail). Oxford, The Ashmolean Museum, University of Oxford. Photo by © Ashmolean Museum, University of Oxford. Mary Cassatt, *Sara in a Large Flowered Hat, Looking to the Right, Holding Her Dog*, ca. 1901 (detail). Collection of Diane B. Wilsey.

Impressionism: Masterworks on Paper

As heirs to the academic tradition within French art, the Impressionists and Post-Impressionists sought out new ways of using drawing, beyond being part of the preparatory process. First, there was a more open approach to the use of media, particularly as regards the adoption of chalk, charcoal, *essence* (thinned oil paint), conté crayon, tempera, gouache, and pastel. Second, greater liberties were taken over the supports. Paper remained the principal support, but board, card, and canvas were needed for the complexities of mixed media, while silk was sometimes favored for fan-shaped compositions. Third, decisive efforts were made to include works on paper in exhibitions and even to mount special exhibitions of draw-

ings alone. There was clearly a realization that works on paper could encapsulate the aesthetic of Impressionism—so dependent on fleeting, transient, fugitive effects—just as easily as paintings, and perhaps more so. To this extent, works on paper were as important as paintings in bringing about the changes in art that Impressionism and Post-Impressionism effected.

In short, the Impressionists and Post-Impressionists—Cézanne, Degas, Renoir, Toulouse-Lautrec, Van Gogh, and others—claimed the freedoms that allowed other artists to push art to its limits.

—Christopher Lloyd, guest curator

Programs and Events

Express Talks

Thurs, Dec 1–Jan 5, NOON

Thurs, Dec 1 and Jan 5, 5:30 PM

Gallery Talk

Tues, Dec 6, 1:30 PM

Gallery Talk in French

Sat, Dec 10, 1:30 PM

Different Strokes: Mary Cassatt's Pastels

Thurs, Dec 15, 6:15 PM

Hear about this fiercely independent and talented American woman who made her mark in the male-dominated world of French Impressionism, with Nancy Mowll Mathews, Eugénie Prendergast Senior Curator of 19th- and 20th-Century Art Emerita, Williams College Museum of Art.

Sponsored by the Fine Arts Society

Impressionism: Masterworks on Paper is organized by the Milwaukee Art Museum in partnership with the Albertina in Vienna. The exhibition was co-curated in Milwaukee by Christopher Lloyd, guest curator, and Laurie Winters, director of exhibitions at the Museum.

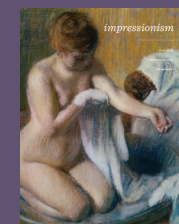
Presented by



The Lynde and Harry
BRADLEY FOUNDATION

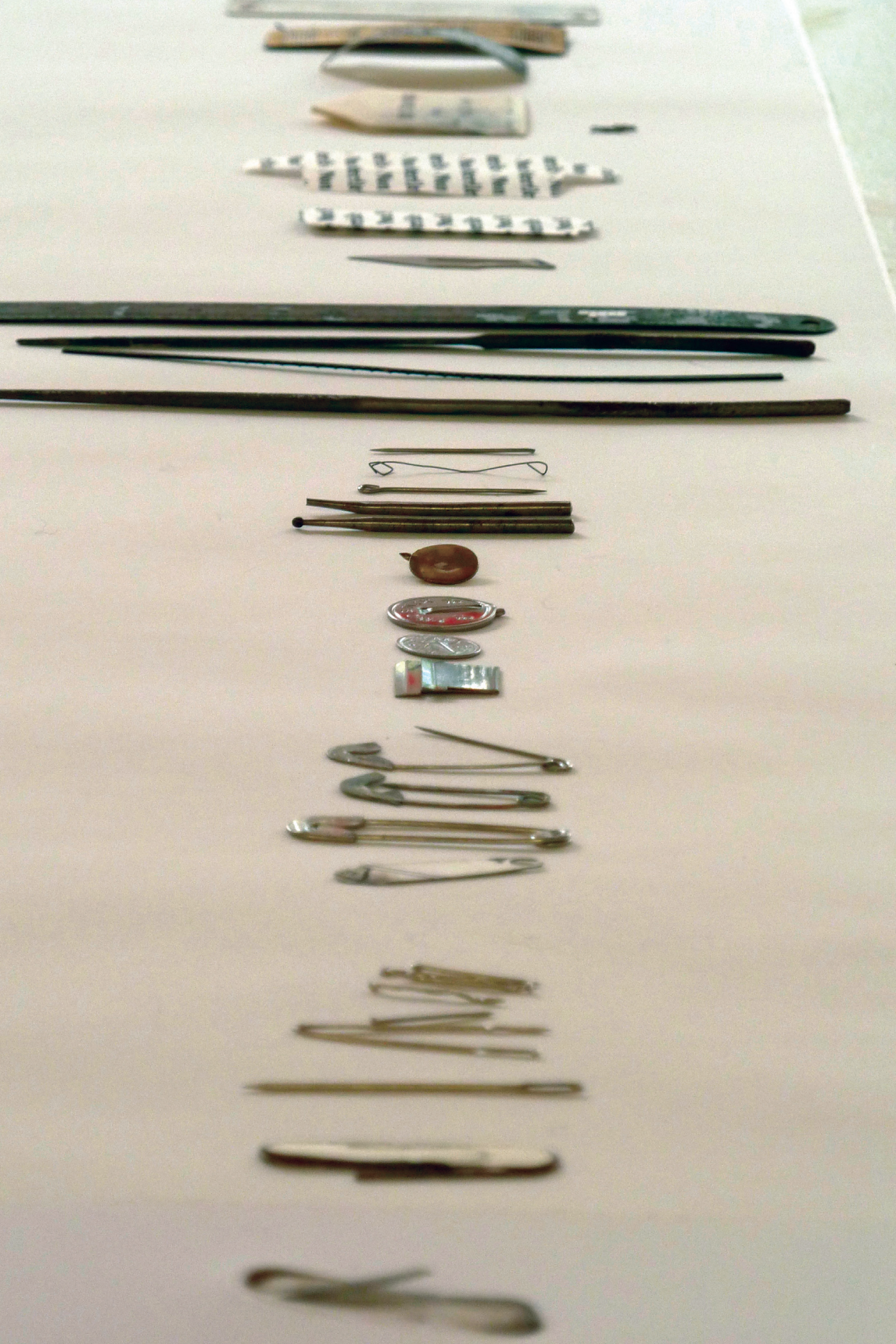


Additional generous support provided by the Einhorn Family Foundation, Nancy and Arthur Laskin, Myron Laskin, Jr., Kenneth R. Treis, Quarles & Brady LLP, the Fine Arts Society in memory of Jane Doud, and The Marcus Corporation.



Impressionism: Pastels, Watercolors, Drawings

Available in the Museum Store and at mam.org/store
softcover: \$39.95/
\$35.95 Member



on view | THE TOOL AT HAND

opening | DEC 8, 2011–APRIL 1, 2012 | DECORATIVE ARTS GALLERY

The Tool at Hand

The Tool at Hand brings together artworks resulting from an unusual and slightly eccentric experiment. Last spring the Chipstone Foundation invited fourteen contemporary artists to break from their usual practice and make a work of art with one tool alone. This exhibition presents these works, and the tools used to craft them, together with short, explanatory videos produced by each artist.

The artists represented in *The Tool at Hand* are established practitioners from the US and the UK and work in a range of materials. Silversmith Ndidi Ekubia, woodworker David Gates, and painter Joy Garnett all employed a traditional tool for their work on view: hammer, saw, paintbrush. Others, such as ceramist Caroline Slotte and designer Tavs Jorgensen, used new or non-traditional tools, from dental drills to customized 3-D printers.

For a group of artists who are accustomed to working with considerable tool kits, this commission presented an inspiring and thought-provoking challenge. Indeed, *The Tool at Hand* puts the skill and creativity of some of the most talented names in the art world today to the test. The exhibition showcases the wonder of the process of making and, at the same time, sparks an important conversation about the nature of skill, production, and tool usage today.

Express Talks

Thurs, Feb 2, NOON and 5:30 PM

Gallery Talks

Thurs, Dec 8 and Jan 19, 6:15 PM

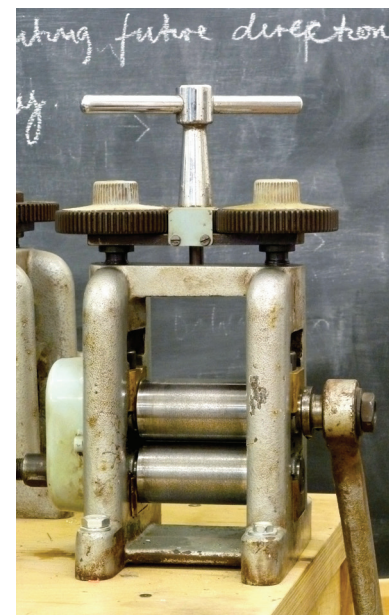
Tues, Jan 31 and Feb 28, 1:30 PM

Save the Date:

Tool Weekend at the Museum

March 16–18, 2012

With artist talks, demonstrations, competitions, and performances



Photos by Helen Carnac

The 2012 Scholastic Art Awards: Wisconsin Exhibition

For more than thirty-five years, the Museum has presented the outstanding artistic talents of our area's youth. Students in grades 7–12 annually awe Museum visitors with their creativity and skill. This year's Scholastic Art Awards exhibition features over 325 artworks in the categories of Architecture, Ceramics & Glass, Comic Art, Design, Digital Art, Drawing, Fashion, Film & Animation, Jewelry, Mixed Media, Painting, Photography, Printmaking, and Sculpture. Twenty-four visual artists and art professionals carefully selected the works from more than thirteen hundred entries based on the students' handling of the materials and the expressive execution of the work.



Sarah Smiley, *Surreal Picnic*, 2011. Mary E. Kelly Award and Gold Key Award in Painting, West HS, Madison, Barbara Drews Instructor. Photo by Kevin Miyazaki.

Students whose artwork has earned an award are recognized in awards ceremonies at the Museum. The Silver Key Award denotes special statewide recognition; artworks receiving a Gold Key Award go on to compete with entries from more than seventy-five other competitions throughout the United States for Silver and Gold Medals.

The Scholastic Art Awards have been recognizing and encouraging excellence in the visual arts throughout the United States for over eighty years. Since 1976, the Wisconsin component has been hosted by the Milwaukee Art Museum, where thousands of young people and their teachers have been encouraged and inspired in their artistic endeavors. Many award winners go on to achieve distinction in the fields of fine and applied arts and design, and credit the early recognition they received as a participant in the Scholastic Art Awards.

Sponsored by the Milwaukee Art Museum, the Milwaukee Art Museum Docents, the Marc & Karen Flesch Memorial Fund, James Heller in memory of Avis Heller, Ray and Sue Kehm, James and Carol Wiensch, and an anonymous donor

Gallery Talk

Tues, Feb 7, 1:30 PM

With exhibition coordinator Helena Ehlke

Last Chance to View...

Taryn Simon: Photographs and Texts Contemporary Galleries

Explore the ambitious works of this internationally acclaimed artist through three different series: *The Innocents* (2002), *An American Index of the Hidden and Unfamiliar* (2007), and *Contraband* (2010).

"With the tenacious sleuthing sensibility of an investigative reporter and a keen eye for the resonantly offbeat, Taryn Simon has spent the past decade turning her lens toward the forbidden and the forgotten, producing documentary photographs paired with concise factual texts." —*Artforum*

Coffee, Art, and Conversation Sat, Dec 3, 10:30 AM–NOON

Discuss some of the complex issues (and sites not publicly accessible) exposed through Simon's works with the artist (via Skype), curator Lisa Hostetler, and Dr. Mordecai Lee, professor of governmental affairs at UWM. RSVP to adults@mam.org or 414-224-3826.

Exhibition sponsored by Herzfeld Foundation

Additional support from Madeleine and David Lubar, Tony and Sue Krausen, Christine A. Symchych, and the Milwaukee Art Museum's Photography Council.



Building a Masterpiece: Santiago Calatrava and the Milwaukee Art Museum

Baumgartner Galleria and Koss Gallery

Trace the evolution of the Quadracci Pavilion's design: see Calatrava's watercolor paintings of his earliest concepts for the building, as well as the models he built, including the breakthrough model with the moveable wings of the Burke Brise Soleil.

Lecture: Calatrava, Milwaukee, and the Challenge of the 21st-Century Museum Wed, Nov 30, 7 PM

Join Paul Goldberger, acclaimed author and architecture critic for the *New Yorker*, for a lecture sponsored by Donald and Donna Baumgartner and Eileen and Barry Mandel. Goldberger's *Why Architecture Matters* (2009) and *Building Up and Tearing Down: Reflections on the Age of Architecture* (2009) are available for purchase in the Museum Store.

Exhibition sponsored by Donald and Donna Baumgartner and Eileen and Barry Mandel

Download the New App!

See the building named the sexiest in the world like never before. Available on iTunes. "The Milwaukee Art Museum's Quadracci Pavilion" features engaging interactives, in-depth video on the building—and you can even flap the wings yourself!



From the Collection

John Singleton Copley, *Alice Hooper*, ca. 1763 (detail). Purchase, with funds from the Leonard and Bebe LeVine Art Acquisition Fund, the Virginia Booth Vogel Acquisition Fund, with funds in memory of Betty Croasdaile and John E. Julien, and gift by exchange of Chapellier Galleries, the Samuel O. Buckner Collection, and the Max E. Friedmann Bequest.

The American paintings galleries on the Lower Level have a fresh new look and include many favorites long off view, as well as a stunning, must-see acquisition.

Ranging from the colonial era to the turn of the twentieth century, the nearly fifty paintings in the reinstalled galleries showcase a history of American art. Rembrandt Peale's early nineteenth-century portrait of a woman previously unidentified is now believed to depict one of the Knapp sisters of New York, and features the Neoclassical gloss Peale learned from French master Jacques-Louis David. Frank Duveneck's masterpiece, *William Adams* (1874), is back on view, as is Richard LaBarre Goodwin's trompe l'oeil painting, *Hunting Cabin Door* (ca. 1889). The Goodwin work provides a distinctive contrast to the small but powerful *Market Basket, Hat and Umbrella* (after 1890) by John Frederick Peto, a leading late nineteenth-century still-life painter.

The Museum's latest acquisition, the portrait of *Alice Hooper* (ca. 1763), is by John Singleton Copley, one of the first native-born painters to achieve success both at home and abroad. Copley thrilled his clients with his seemingly miraculous realism. The portrait of the seventeen-year-old Hooper was commissioned by her father, who was among the wealthiest in Marblehead, Massachusetts, and led to ten additional commissions of family members. Through the years, *Alice Hooper* was passed through the extended Hooper family before it was offered for sale. From the late 1970s to the early twenty-first century, the portrait was on loan to the Diplomatic Reception Rooms at the U.S. Department of State, where visiting dignitaries would have seen it as a marvelous example of American painting.

Gallery Talk:

John Singleton Copley's *Alice Hooper*

Tues, Jan 24, 1:30 PM



Terri and Verne Holoubek

Names: Terri and Verne Holoubek

Members Since: 2001

Favorite Works: *Waterloo Bridge, Sunlight Effect* by Claude Monet (Terri); *Zephyr Land-Yacht* by Brooks Stevens (Verne)

Terri and Verne Holoubek each embraced the value of creativity in their lives early on and together started the thriving T-shirt company Holoubek Inc., and later helped brand Harley-Davidson, Miller Brewing, and Summerfest, among others. Today the Holoubeks, along with their foundation, work to inspire subsequent generations by providing the thousands of schoolchildren who visit the Museum each year with a Family Pass, which affords students the opportunity to make a return visit to the Museum with their families—free.

Why is art important to the children of our community?

We believe that art is a way for children to experience the world. There are children in our community whose families will never travel beyond their own neighborhood, but they can discover the entire world—and open their minds to other cultures—through the paintings, sculptures, and photographs on view at the Museum.

What role can art play in a child's life?

Art is a powerful form of self-expression. With a single trip to the Museum, students learn that art can be a meaningful way for them to convey their own feelings, thoughts, observations, hopes, and dreams. Art can help a child give shape to what they believe is possible for themselves and the world.

Why do you support the Family Passes?

The foundation provides funding for these passes because they give children an additional opportunity to spend more time in the Museum, with their families, to share what they've learned, to increase their understanding, and to hopefully become better people because of it.



Karen and Matthew Ballman

Name: Karen and Matthew Ballman
Day Job: Home Help Aid
Member Since: 2004
Favorite Work in the Collection:
Mummy Coffin of Pedusiri, Egyptian

Karen Ballman strongly believes in art education when it comes to her son, Matthew. They have been active participants in classes, Open Studio, and other family programs at the Museum since Matthew was four. "To us, the art museum is not just a building, but an extension of our family."

What do you like most about family programming at the Museum?

The teachers. They have such a love for what they do, and they convey this to the children. We strongly believe they are the greatest assets at the Museum, besides the artwork. My son loves classes at the Museum, and it's because of those classes that he wanted to switch schools when his previous school cut its art program.

How does being a Member contribute to your experience?

Being a Member allows us to drop in, admission free, whenever we want, for an entire day or for just an hour. There is always something new and exciting, and our membership allows us to experience it all.

What do you think about the new Kohl's Education Center opening in February?

It will be a great extension for my son. Every child needs a well-rounded life filled with everything from sports, art, and nature to something spiritual. He's earned badges as a boy scout, won art contests and awards—all based on the work he has done here. He's even found it helpful for writing papers at school. And he has gotten to know many new people over the years.

Keep up the good work! We love coming here.

Learn + Play Creative Classes for Kids

Youth (Ages 3-15)

Wee Artists 🎨 📅

Ages 3-5 (with adult)

Thursdays, 10:30 AM-NOON

Dec 8: Big & Little

Jan 12: All Kinds of Lines

Feb 9: Light & Dark

Play Date with Art

Ages 5 and under (with adult)

Fridays, 10 AM-NOON

(Singing Time at 10:30 and 11:30 AM)

Dec 16: Music Makers

Jan 20: Birds of a Feather

Feb 17: Painting Together

Free with Museum admission; registration not required.

Partners in Art 🎨 📅

Ages 6-10 (with adult)

Saturdays, 10:30 AM-NOON

Dec 17: Discovering Impressionism

Jan 14: All About Texture

Feb 11: Landscapes

Youth Studio Class:

Painting and Drawing

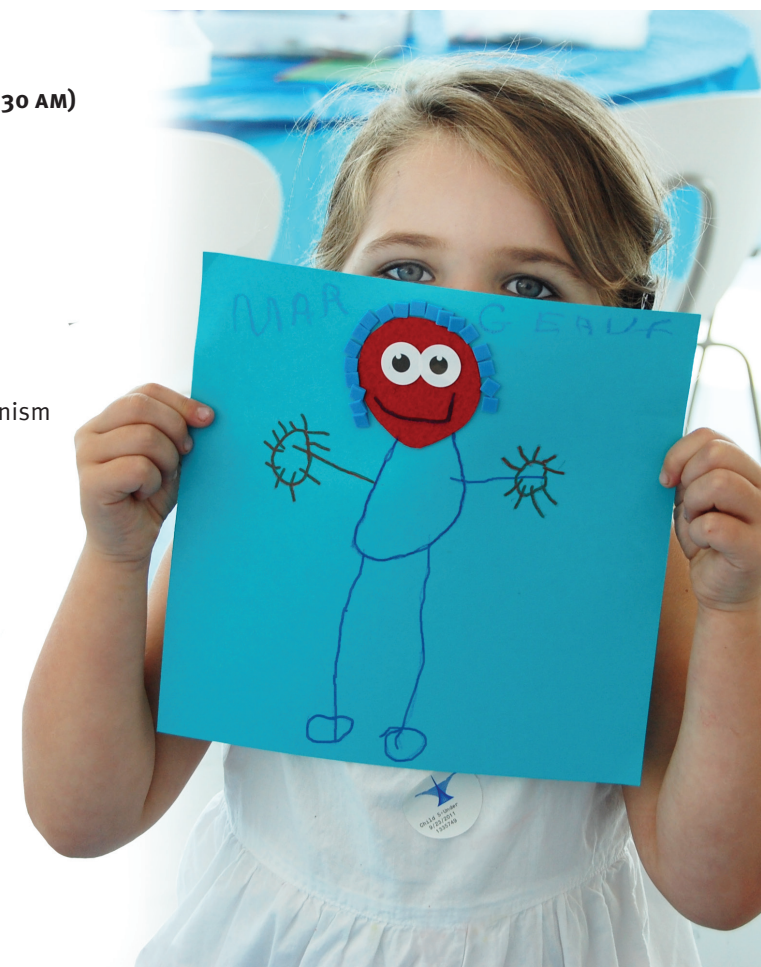
Dreamlike Scenes 🎨 📅

Ages 6-10 and 11-15

8 Thursdays: Feb 2-March 22

4:30-6 PM

For a complete listing of classes and details, visit www.mam.org. To register, call 414-224-3803. Members receive discounts on all classes; gift certificates and scholarships are also available.



KOHL'S ART GENERATION

Kohl's Education Center Grand Opening!

Saturday, February 25, 10 AM–4 PM

The Kohl's Art Generation Gallery and Studio are moving to a new home at the Milwaukee Art Museum and, together with the Kohl's Art Generation Lab, forming a center for creative discovery! Join us as we unveil the new facilities; there will be hands-on activities, prizes, and more.

Kohl's Art Generation Gallery

Animation: Art Goes to the Movies

Opening February 25, 2012

Discover how paintings, sculptures, and other works of art have inspired movies such as *Princess and the Frog*, *Madagascar*, and the *Tales of Despereaux*. Learn how animation artists develop their characters and get them to move, and try your hand at stop motion animation.

Kohl's Art Generation Lab

Museum Inside Out

Opening February 25, 2012

Explore what happens behind the scenes at an art museum! X-ray a painting, change the frames on works of art, ask the Museum curators about their work, the exhibitions—and more. This interactive experience combines high-tech activities with low-tech ones for an inside look at the way museums work.



Weekend Family Programs

Each weekend, Story Time in the Galleries, Sketching in the Galleries, and the Kohl's Art Generation Open Studio provide new opportunities to explore art. Families can drop in for a few minutes or stay all day.

Saturdays

Story Time in the Galleries

10:30 AM

Come hear a story that relates to a work of art in the galleries, and then make a drawing inspired by what you have seen and heard.

December 3, 10, 17, 24, 31

January 7, 14, 21, 28

February 4, 11, 18, 25

Sketching in the Galleries

1–3 PM

Drop in and try your hand at sketching from artworks in a different gallery each week. No experience necessary! Materials are provided.

December 3, 10, 17, 24, 31

January 7, 14, 21, 28

February 4, 11, 18, 25

KOHL'S Cares

Visit the Kohl's Art Generation website at mam.org/artgeneration.

Sundays

Kohl's Art Generation Open Studio

10 AM–4 PM

Stop by the studio to create art inspired by the Museum's Collection and exhibitions. Each month features a different theme, and the art projects change weekly!

December 11, 18 Painting & Drawing

Additional Open Studio hours:

December 26–31, 10 AM–4 PM

January 1, 8, 15, 22, 29 Black & White All Over

February 5, 12, 19, 26 Fall in Love with Art

**Kohl's Art Generation Family Sundays:
The Gift of Art**

Sunday, December 4, 10 AM–4 PM

Celebrate the spirit of the holidays together as a family—through art! Take part in hands-on art activities inspired by the *Impressionism: Masterworks on Paper* exhibition and make your very own art creations to keep or to give as gifts. Meet two artists active in Wisconsin, painter Diana Budde and collage artist Randel Plowman, explore the Museum's Collection on a family-friendly tour, and enjoy the sounds of the season.

Save the Date!

**Kohl's Art Generation Family Sundays:
Making Your Mark**

Sunday, March 18, 10 AM–4 PM

Holiday Happenings

Holiday Hours

Christmas Eve Open | 10 AM–3 PM

Christmas Day Closed

Monday, Dec 26 Open | 10 AM–5 PM

New Year's Eve Open | 10 AM–5 PM

New Year's Day Open | 10 AM–5 PM

The Neapolitan Crèche

On view through Jan 2012

Collection Galleries, Gallery 4

Museum Store:

Member Double Discount Days

Thurs, Dec 1, 8, 15, and 22, 10 AM–8 PM

Fri, Dec 16, at MAM After Dark, 5–10 PM

Get your holiday décor, trim the tree, and find memorable, one-of-a-kind gifts at 20% off. Members always enjoy free gift-wrapping. Free shipping on purchases made online through December 15.



Fine Arts Society Holiday Luncheon

Fri, Dec 2, 11:30 AM

Get a behind-the-scenes look at the making of the exhibition *Impressionism: Masterworks on Paper*, over lunch at the Woman's Club of Wisconsin with Director of Exhibitions Laurie Winters. \$35/person (includes lunch); RSVP to 414-224-3293.

Kohl's Art Generation Family Sundays:

The Gift of Art

Sun, Dec 4, 10 AM–4 PM

See page 19 for event details.

Gallery Talk: A Christmas Story with

Barbara Brown Lee

Tues, Dec 13, 1:30 PM

Celebrate the art of the season with Chief Educator Barbara Brown Lee, as she shares stories from religious works in the galleries, including the Neapolitan crèche.

Kohl's Art Generation Open Studio

Additional Holiday Hours

Mon–Sat, Dec 26–31, 10 AM–4 PM

See page 19 for program details.

THIS PAGE *Nativity Scene (Crèche)*, Naples, mid-18th century (detail). Gift of Loretta Howard Sturgis. Photo by John R. Glembin

OPPOSITE Richard H. Jansen, *East Side Street in Winter*, n.d. (detail). Layton Art Collection, Gift of Layton Art League. Walker Evans, *Couple at Coney Island, 1928* (detail). Purchase, with funds from Friends of Art. Photo by John R. Glembin.

Other Events



Film: *We Were Here:*

The AIDS Years in San Francisco

Thurs, Dec 1, 6:15 PM

This documentary is presented on World AIDS Day in collaboration with the Milwaukee LGBT Film/Video Festival, <http://arts.uwm.edu/lgbtfilm>.

Member Swap Day with Area Museums

Sun, Dec 4, 10 AM–5 PM

Enjoy four times the fun: at the Museum with Kohl's Art Generation Family Sundays (see p. 19), Betty Brinn Children's Museum, Discovery World, and the Milwaukee Public Museum. Museum Members get in free to all four, with membership card and photo ID.

One-Hour Exhibitions:

Prints, Drawings, and Photographs

Drop in for an intimate look at the works that comprise the largest part of the Museum's Collection, yet because of their vulnerability to light, are rarely on view. *Space is limited; admission is first come, first served.*

Winter Scenes Across the Ages

Prints and Drawings, with curator Mary Weaver Chapin

Tues, Jan 17, 1:30–2:30 PM

Thurs, Jan 19, 5–6 PM

Love in the Lens

Photographs, with curator Lisa Hostetler

Tues, Feb 21, 1:30–2:30 PM

Thurs, Feb 23, 5–6 PM

Asian Art Weekend

Sat, Jan 28, 10 AM–2 PM

Assessments; \$5 (cash/check) per object

Sun, Jan 29, 1 PM

Panel Discussion

Learn more about the Asian art you own from an expert, who will tell you details about your object(s)*, and in a discussion on the Asian art market and on developing a collection. Participants include James B. Godfrey, former director of Chinese art at Sotheby's, and Sebastian Izzard, a New York-based dealer of Japanese art. **Objects must be able to be carried by hand; no values will be given.*

Sponsored by the Fine Arts Society



Impressionism opening
PRESIDENT'S CIRCLE
OCT 12, 2011



NORTHWESTERN MUTUAL
FOUNDATION PRESENTS

MAM After Dark Winter Edition

Fridays, Dec 16, Jan 20,
Feb 17, 5 PM–MIDNIGHT

Welcome your holidays in a less than traditional way, get salsa-fied, and let the good times roll at MAM After Dark this winter. And lest we forget—there's music, food, shopping, make-and-take art, and that famous Photo Booth, where you can document your escapism into "M.A.D."-ness!

In December, MAM After Dark celebrates that timeless, thankless holiday—**Festivus!** Join "the rest of us" for an evening around the Festivus Pole; come prepared for the Feats of Strength challenges, and take part in the Airing of Grievances. It's also your last After Dark chance to see *Impressionism: Masterworks on Paper* and to take a curator-led tour through *Taryn Simon: Photographs and Texts*. For every person that attends, the Museum will make a donation to "The Human Fund," plus there'll be prizes—and more.

So you think you can salsa? Back by popular demand, a **Hot Hot Hot** night of tantalizing salsa dancing and Latin foods returns in January. Enjoy music by Cache,



one of Milwaukee's hottest bands, as you dance the night away. Don't know how to put your best foot forward? Instructors will be on hand to demonstrate and teach you all the right moves.

February ushers in the *Accidental Genius: Art from the Anthony Petullo Collection* exhibition, and with it, **MAM After Dark: Mardi Gras!** It'll be a rockin' good time with zydeco music, Cajun-style food, King cake, beads, and a "best costume" contest, with outstanding prizes. As they say in New Orleans, *Laissez les bons temps rouler*.

MAM After Dark Admission

Free for Members

>>Join at the door, get in free with a friend
\$12 at the door/\$6 in advance at
mam.org/afterdark



the ONION

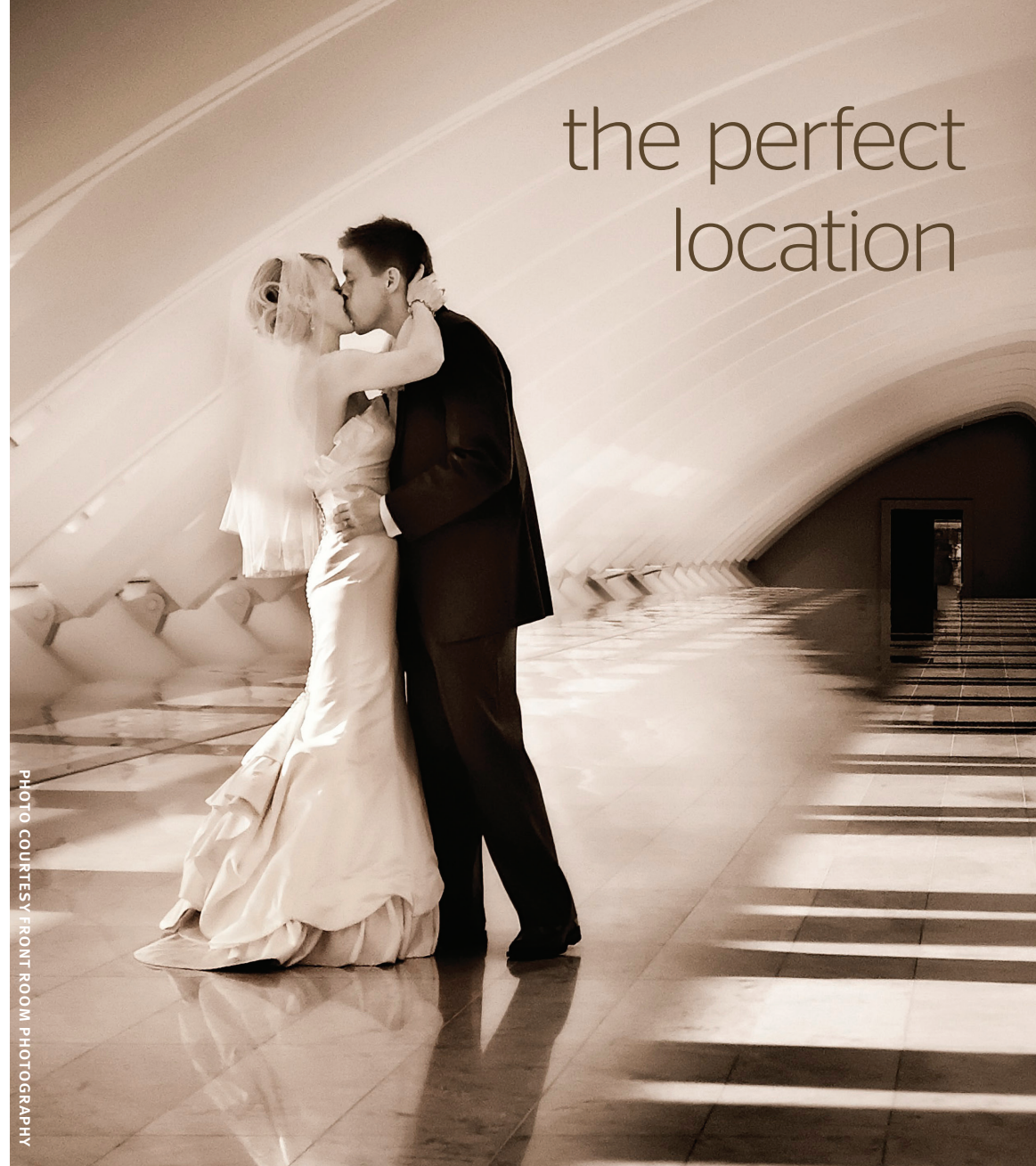


PHOTO COURTESY FRONT ROOM PHOTOGRAPHY

the perfect
location

YOUR COMMITMENT OF LOVE—
FRAMED IN A WORK OF ART.

With breathtaking views, a grand hall of unrivaled elegance, and inspired menus, the Milwaukee Art Museum creates priceless memories for your wedding day.

Book your event today, contact 414-224-3287 or weddings@mam.org.

Wrap Up Inspired Gifts!

Bangles

Mix and match handmade Lucite bangles by internationally acclaimed jewelry designer Alexis Bittar.

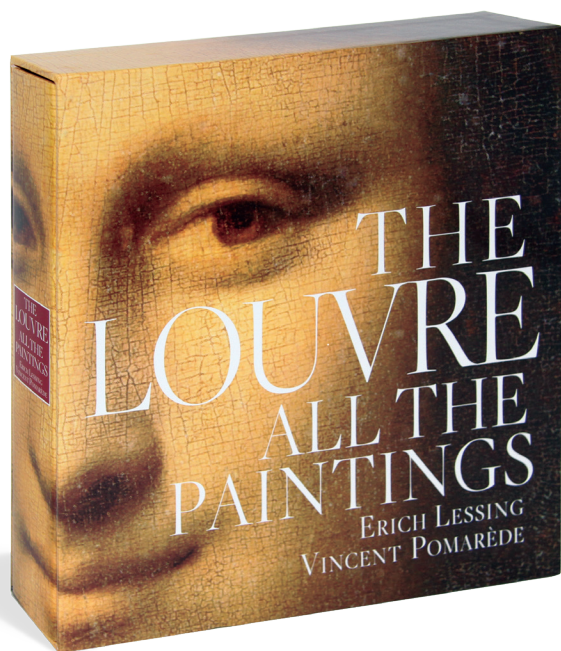
\$65-\$395/\$58.50-\$355.50 Member



The Louvre: All the Paintings

Gift the Louvre, and all 2,981 paintings in its collection, complete with searchable DVD-ROM.

\$75/\$67.50 Member



Pateo Stainless Steel Mesh Watch

For those who keep time, without being constrained by it—a strong yet elegant wristwatch by architect Rainer Mahlamäki.

\$156/\$140.40 Member

Superior Servers

Serve up something sassy with utensils designed by Jean Lee and Dylan Davis of Ladies & Gentlemen Studio.

\$42/\$37.80 Member



Milwaukee Art Museum Ornament

Trim the tree with a hand-painted ornament of Milwaukee's icon, featuring a design by Milwaukee artist Chrisanne Robertson.

\$18/\$16.20 Member

"Sunny" Plush Toy

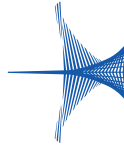
Snuggle up with "Sunny," inspired by Alex Katz's popular canine in the Museum's Collection.

\$20/\$18 Member



The Perfect Gift. Museum Membership.

Don't delay—the holiday season is almost here! Give family, friends, and colleagues a gift they can enjoy all year. Member benefits include free admission and daily discounts. Purchase three or more gift memberships, and receive 20% off.
Call 414-224-3284 today.



MILWAUKEE ART MUSEUM
700 NORTH ART MUSEUM DRIVE
MILWAUKEE, WI 53202
414-224-3200 | www.mam.org

Non-Profit Org.
U.S. Postage Paid
Milwaukee, WI
Permit No. 374