

MILWAUKEE ART MUSEUM



September

Exhibitions

OPENING THIS MONTH

Artists Interrogate: Politics and War

KOSS GALLERY

SEPTEMBER 17–DECEMBER 26

Art has been used for political aims throughout the centuries, both as propaganda and commentary. When used by the state, art is usually summoned to promote official positions. However, artists working on their own often use their talents to critique the action or inaction of their government, promote an opposing view or expose hidden agendas. Such objects, ranging from the 17th century to the present and representing diverse opinions, are on view in *Artists Interrogate: Politics and War*. Drawn largely from the Collection, these works provide interesting perspectives from previous eras of political turmoil both in the United States and abroad.

The exhibition is organized by the Milwaukee Art Museum and curated by Sarah Kirk, assistant curator of prints, drawings and photographs.



Francisco Mora, *Emiliano Zapata, Leader of the Agrarian Revolution* from the *Estampas de la Revolución Mexicana (Prints of the Mexican Revolution)* portfolio, 1947. Linoleum cut. Milwaukee Art Museum, Gift of Max and Kay Kurz.

LAST CHANCE

Byrdcliffe: An American Arts and Crafts Colony

DECORATIVE ARTS GALLERY

THROUGH SEPTEMBER 19

Currents 31: Robert Melee

CUDAHY GALLERY

THROUGH SEPTEMBER 19



Tom Uttech, *Nin Mamakadenima*, 2002–3. Oil on canvas. Lent by Mr. and Mrs. Arthur S. Pier, New York.

NOW ON VIEW

Magnetic North: The Landscapes of Tom Uttech

BAKER/ROWLAND AND NORTH EXHIBITION GALLERIES

THROUGH OCTOBER 3

Don't miss this exciting exhibition featuring the work of one of the most widely admired landscape painters in America, Tom Uttech. A Wisconsin native, Uttech lives and works out of his studio in Saukville. Walking into this exhibition is like taking a stroll through the North Woods. The intricate detail achieved by the artist's precise painterly touch brings alive the sights, sounds and scents of the places depicted in the paintings. This sensation is as palpable in Uttech's small paintings as it is in his 10-foot canvases. Make sure to take advantage of this immersion in nature before October 3.

The exhibition is organized and curated by Margaret Andera, curator. Sponsored by We Energies as part of the Museum's "Celebration of Nature." Additional support provided by the Mae E. Demmer Charitable Trust. A full-color catalogue accompanies the exhibition.

MARK YOUR CALENDARS

Gallery Talk

Tuesday, Sept. 14, 1:30 p.m.

Family Sundays—Sticks and Stalks and Nature Walks

Sunday, Sept. 19, noon–4 p.m.

Print Forum Collector's Club

Start or enhance your art collection with a print by Tom Uttech, whose work is currently being featured at MAM. Each year Print Forum, a support group of the Milwaukee Art Museum, commissions a print edition from a nationally recognized artist. Print Forum is delighted to announce Tom Uttech as the artist for the 2004–05 edition. Quantities are limited, but you can reserve a copy of the print now by joining Print Forum at the Collectors' Club level of \$500. You'll also get all the other benefits of membership, which include special receptions and workshops, behind-the-scenes tours, and social events related to the graphic arts.

Subscribe early to guarantee your copy of an original Tom Uttech print. See pictures of past editions, some of which are still available to Collectors' Club members at a discounted price, on www.mam.org, click on Support Us—Support Groups—Print Forum. Information: 414 224 3293.

Programs

SPECIAL EVENTS

Degas Sculptures Advance Lecture and Dinner

THURSDAY, SEPTEMBER 9, 6:15 P.M.

This February, MAM features *Degas Sculptures*, an exhibition of all 73 bronze sculptures created by this seminal painter and sculptor. The evening begins with a lecture by Ann Dumas, one of the foremost authorities on the work of Edgar Degas. Dumas is a freelance art historian from London and a consulting curator for this popular exhibition. She recently served as guest curator for exhibitions at the Metropolitan Museum of Art, the High Museum of Art and The National Gallery, London. Lecture free with general admission. Dinner follows in the Café, \$65 per person. RSVP by September 3 for dinner: 414-224-3293.

Sponsored by the Fine Arts Society.



Brunch Under the Burke Brise Soleil

SUNDAY, SEPTEMBER 12, 10:30 A.M. – 2 P.M.

Enjoy a delicious buffet and beverages including bottomless glasses of champagne or mimosas. Sit back and relax to musical accompaniment provided by pianist John Foshager. Take a stroll through the enchanting and mystical feature exhibition *Magnetic North*. \$30/\$25 Members/\$10 children 12 and under (price includes brunch, tax and general Museum admission). Reservations and information: 414-224-3831.

Visitors enjoy the kick-off of MAM's Sunday Brunch program.

Present Music Season Opener and Pre-Concert Buffet Dinner

FRIDAY, SEPTEMBER 17, 5:30 P.M. DINNER, 7:30 P.M. CONCERT

Start the evening off with a buffet dinner in the Museum Café. Enjoy continental cuisine featuring a fresh array of salads, desserts and main entrees. \$35/\$30 Members (price includes dinner, tax, gratuity and general admission). Reservations: 414-224-3826.

Present Music kicks off its 23rd season with an eclectic mix of music featuring composers known for using sound and the power of imagination to evoke a feeling of adventure. Concert tickets: 414-271-0711 (MAM Members receive a discount).

Music in the Museum

TUESDAY, SEPTEMBER 21, 5:30 P.M.

Dr. Jeffrey Hollander celebrates *America the Beautiful*. Get into the American spirit with some of our most beautiful American music as we celebrate the opening of the WWII Memorial and learn the stirring true story behind the creation of the beloved song *America the Beautiful*. Enjoy the music of Stephen Foster, Aaron Copland, Leonard Bernstein and George Gershwin. \$20/\$15 Members, students and senior citizens. Reservations: 414-224-3825.



2003 Grape Lakes chefs celebrate a successful Wine and Dine Gourmet Dinner.

FESTIVAL

Grape Lakes Food & Wine Festival

WEDNESDAY, SEPTEMBER 29 – SATURDAY, OCTOBER 2

WEDNESDAY, SEPTEMBER 29, 6 P.M. (REGISTRATION BEGINS AT 4 P.M.)
Join Friends of Art for the **Grape Stomp Run/Walk**. This is a USATF-certified twilight 5K run or 2-mile walk. Pre-registration available Sept. 25, 10 a.m.–2 p.m. \$20 race day registration/\$15 pre-registration.

FRIDAY, OCTOBER 1, 6 P.M.

Sample fine wines and delectable dishes at the **Wine and Dine Gourmet Dinner**. A champagne reception and silent auction are followed by dinner featuring 10 of Milwaukee's premier chefs.

SATURDAY, OCTOBER 2, 6 P.M.

Friends of Art presents the **Grand Tasting**. Enjoy a wine and beer tasting accompanied by delicious food.

Registration and information for all Grape Lakes events: 414-224-3852.

MAM BENEFIT

10th Annual Golf Fore! Art Open

MONDAY, SEPTEMBER 13

Friends of Art hosts the 10th annual Golf Fore! Art Open at the Chenequa Country Club in Hartland. Help raise some greens to benefit the Milwaukee Art Museum's Art Acquisition and Exhibition Fund. Outing includes golf, lunch and buffet reception. Hole sponsors, foursomes and singles available. For more information or to receive an invitation: 414-224-3850.

Edgar Degas, *Little Dancer, Aged Fourteen*, model: 1878–1881 cast: 1922–1937. Bronze, tulle skirt, satin ribbon. Collections of Museu de Arte de São Paulo, Brazil. Courtesy of International Arts, Memphis, Tennessee.
Photo by Pierre-Alain Ferrazzini.

Information

UPCOMING EXHIBITION

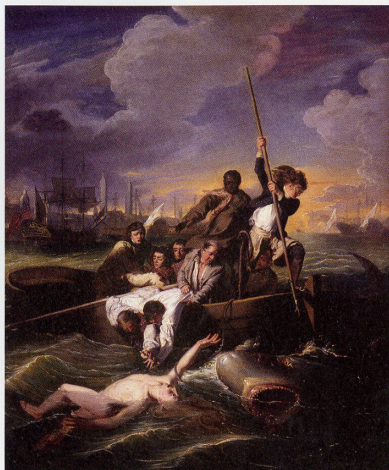
Masterpieces of American Art, 1770–1920 From the Detroit Institute of Arts

BAKER/ROWLAND AND NORTH EXHIBITION GALLERIES
OCTOBER 23, 2004–JANUARY 30, 2005

Excitement at the Museum is growing in anticipation of this star-studded exhibition. The Detroit Institute of Arts, while undertaking a renovation of their building, has sent their celebrated works of American art on a tour to select cities, including Milwaukee. The exhibition's 90 pieces of art demonstrate the first uniquely American definition and style of beauty. Included in the show are such groundbreaking artists as Benjamin West, John Singer Sargent and John Singleton Copley, in addition to the distinctly American Hudson River School paintings.

The exhibition is organized by the Detroit Institute of Arts and is coordinated at MAM by Glenn Adamson, curator of the Chipstone Foundation and MAM adjunct curator. Sponsored by M&I Bank and Michael Best & Friedrich LLP.

John Singleton Copley, *Watson and the Shark*, 1777–78. Oil on canvas. Collection of The Detroit Institute of Arts, Founders Society purchase, Dexter M. Ferry, Jr. Fund.



MEMBER INFORMATION

Member Feature Exhibition Ticket Benefits

As a member, you receive FREE tickets to view *Masterpieces of American Art, 1770–1920: From the Detroit Institute of Arts*.

The number of FREE tickets for Member levels is indicated below:

Student, Senior, Individual and Family/Dual levels receive 2 free tickets

Contributing Members (Friends of Art and higher) receive 4 free tickets

All Members' children 17 and under receive free admission

Additional tickets may be purchased for \$4 each

How to Get Tickets?

Exhibition tickets are for use only during the dates that the exhibition is on view to the public. This means that additional exhibition tickets are not required for Member Preview Days (including Member-Only Gallery Talks) and Exhibition Opening Celebrations.

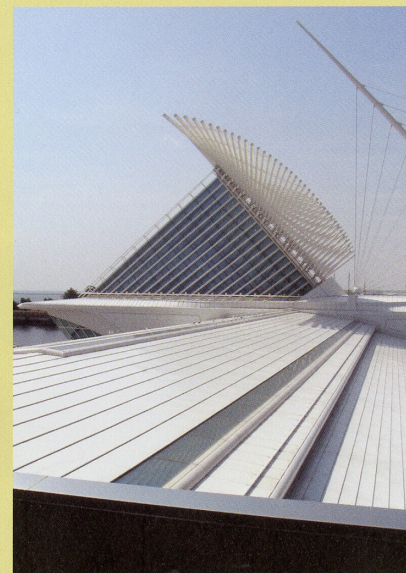
To receive your ticket, present your membership card at the MAM admission desks during Museum hours. Tickets are issued on-site for same day visits. Advance tickets are not necessary.

Now It's Even Easier to Renew!

Save time, save money! Sign up today for the Automatic Renewal Program and we'll do the work for you. Simply indicate on your membership renewal form that you would like to enroll in this new program when you receive your statement. In the future, rather than receiving renewal notices from us, we will simply renew your membership at the giving level you indicated. Information: Membership Hotline at 414-224-3284.

Membership Mailing Alert

Interest in MAM continues to grow! In October, MAM information will be sent to 75,000 households in the community who are interested in the arts. Despite our best efforts to remove our Members' names from the list we use, you might receive this mailing. If you receive our mailing, please pardon us and pass it on to a friend, colleague or neighbor you think may be interested in becoming a MAM Member. Thank you!



MILWAUKEE ART MUSEUM
700 North Art Museum Drive
Milwaukee, WI 53202
www.mam.org
Museum Offices 414-224-3200
Membership Hotline 414-224-3284
Information Line 414-224-3220

HOURS

Daily 10 a.m. to 5 p.m. except Thursday open until 8 p.m.
(Supported by the Greater Milwaukee Foundation.)

ADMISSION

General admission prices are free for MAM Members, \$8 for adults, \$6 for seniors and \$4 for students, children 12 and under free when accompanied by an adult.

Magnetic North: The Landscapes of Tom Uttech is included in the general admission ticket.

Masterpieces of American Art, 1770–1920: From the Detroit Institute of Arts requires a separate admission ticket. Exhibition tickets are \$12 adults, \$10 seniors, \$8 students, children 12 and under free. Ticket includes general admission and an audio guide. Tickets are sold on-site for same-day visits only. Advance tickets are not necessary.

Members receive free previews before exhibition opens to the public and at least two free tickets after opening.

GROUP VISITS

Admission arrangements may be made for adult groups of 15 or more and school groups of 10 or more by calling 414-224-3842.

ACCESS INFORMATION

MAM is wheelchair and stroller accessible.

PARKING

Underground parking garage.

West of Museum at O'Donnell Park.

North of Museum in War Memorial parking lot.

BURTON & MAYER INC.
PRINTERS • LITHOGRAPHERS

Education

See this month's education insert for a full list of classes.

OPENING THIS MONTH

Stories to Tell and Retell The Puppets of Ashley Bryan

PIEPER EDUCATION GALLERY
OPENS SEPTEMBER 19

Explore African and African-American folk tales through the puppets of painter, illustrator, storyteller and puppet maker Ashley Bryan and related African works from MAM's Collection. This exhibition includes approximately 25 puppets as well as a puppet theater for children to create their own stories.

As an art form, puppetry combines writing, acting, puppet making, staging and sets. This exhibition examines how a contemporary artist is influenced by African art and culture to tell both old and new stories through the art of puppetry.

Bryan may be best known for his books, which include illustrations for more than 30 titles, many of which he wrote or retold based on traditional stories. *Beat the Story Drum*, *Pum-Pum* won the Coretta Scott King Award for its spirited illustrations and four others have been selected as Coretta Scott King Honor Books.

The exhibition is organized by MAM and curated by Brigid Globensky, senior director of education and programs.



FROM THE COLLECTION

This fall the American Collections galleries will undergo a transformation as the Museum's 19th-century American paintings are reinstalled. Timed to coincide with the arrival of *Masterpieces of American Art, 1770–1920: From the Detroit Institute of Arts*, the new hanging will include interpretive materials that provide fresh insights about some familiar icons of the Collection.

One such painting is Jonathan Eastman Johnson's wonderful image of children at play, *The Old Stagecoach*. Though to modern eyes it seems a confection of the artist's sentimental imagination, Johnson claimed that the painting was based on a real broken-down coach he had seen in the Catskill Mountains. The artist added certain details to emphasize his theme of a disappearing pre-industrial America. He added the group of children to dramatize the theme of disappearing innocence, and emblazoned the coach's side with the title "Mayflower."

This masterpiece came to Milwaukee when it was purchased by the meatpacking magnate, philanthropist and connoisseur Frederick Layton. Johnson's full-length portrait of the city's great art patron is another treasure of the Layton Art Collection, which continues to acquire American paintings and decorative arts to be shown at the Museum.



Jonathan Eastman Johnson, *The Old Stagecoach*, 1871.
Oil on canvas. Milwaukee Art Museum, Layton Art Collection.

OPENING THIS MONTH

ArtXpress Opening

SATURDAY, SEPTEMBER 11, 1–4 P.M.

This summer, MAM's education department worked with area students to create a bus mural as part of the ArtXpress initiative to address environmental issues in Milwaukee. Celebrate the culmination and unveiling of this project with a reception, viewing of the bus, and a screening of the French documentary film *The Gleaners and I*.

FAMILY EVENT

Family Sundays Sticks and Stalks and Nature Walks

SUNDAY, SEPTEMBER 19, NOON–4 P.M.

Take an imaginary trip to the North Woods. Create a nature journal and a specimen bag, then practice your sketching skills on a nature walk through the *Magnetic North* exhibition. Children's book author Kathy-Jo Wargin will be on hand to read and sign books. Wargin's books focus on nature legends, including *The Legend of Sleeping Bear*, *The Legend of the Loon*, *The Legend of the Lady's Slipper* and *B is for Badger, a Wisconsin Alphabet*. Free with general admission.

Sponsored by Midwest Airlines and Assurant Health.

NEW EVENT SERIES

MAM Film Contemporary/Experimental

THURSDAY, SEPTEMBER 30, 7–9 P.M.

MAM kicks off a new event series this fall, *Curate an Evening of Film*. Each month, a featured guest filmmaker, videographer or historian will be invited to the Museum to host an evening of film. The series showcases an eclectic mix of topics ranging from the very contemporary avant-garde to better-known classics. Each curator presents his/her program along with discussion on the content and meaning of the film. The series will run monthly through April.

September's event features filmmaker and curator Christine Khalafian examining a selection of contemporary experimental films/videos. A film teacher at UW-Milwaukee, Khalafian programmed the first North African Arab Film Festival at the UWM Union Cinema. Her film *Mark Set Burn* was shown at the 2003 Sundance film festival. \$7/\$5 Members and senior citizens (65 and older).

September 2004

For event details, visit www.mam.org.

9 THURSDAY

Advance Lecture *Degas Sculptures*
6:15 p.m.

Dinner *Degas Sculptures*
Sponsored by the Fine Arts Society
6:15 p.m.
414-224-3293

11 SATURDAY
ArtXpress Opening
1–4 p.m.

12 SUNDAY
Brunch Under the Burke
Brise Soleil
10:30 a.m.–2 p.m.
414-224-3831

13 MONDAY
10th Annual Golf Fore! Art Open
Chenequa Country Club, Hartland
Hosted by Friends of Art
414-224-3850

14 TUESDAY
Gallery Talk *Magnetic North:
The Landscapes of Tom Uttech*
1:30 p.m.

17 FRIDAY

Artists Interrogate: *Politics
and War* opens

Pre-Concert Buffet Dinner
5:30 p.m. 414-224-3826

Present Music Season Opener
7:30 p.m. 414-271-0711



Byrdcliffe Colony, *Side Chair*, ca. 1904,
panel designed by Zulma Steele, cherry
and leather upholstery. Milwaukee Art
Museum, Layton Art Collection.

19 SUNDAY

Family Sundays—Sticks and Stalks
and Nature Walks
Sponsored by Midwest Airlines and
Assurant Health
noon–4 p.m.

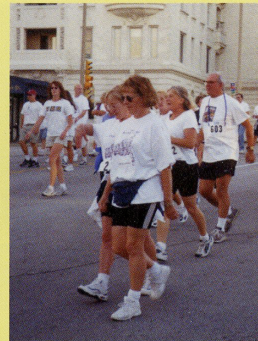
Byrdcliffe: *An American Arts and
Crafts Colony* closes

Currents 31: Robert Melee closes

21 TUESDAY
Music in the Museum
5:30 p.m.

23 THURSDAY
Talk *Collecting Photography*
6:15 p.m.
Sponsored by Contemporary Art Society

28 TUESDAY
Gallery Talk *Artists Interrogate:
Politics and War*
1:30 p.m.



Grape Stomp Run/Walk, part of the 2004
Grape Lakes Food and Wine Festival.

29 WEDNESDAY
2004 Grape Lakes Food and
Wine Festival
Grape Stomp Run/Walk
Sponsored by Friends of Art
6 p.m.

30 THURSDAY
MAM Film
Contemporary/Experimental
The first in a monthly series
7 p.m.

COMING IN OCTOBER

1 FRIDAY
2004 Grape Lakes Food and
Wine Festival
Wine and Dine Gourmet Dinner
6 p.m. 414-224-3852

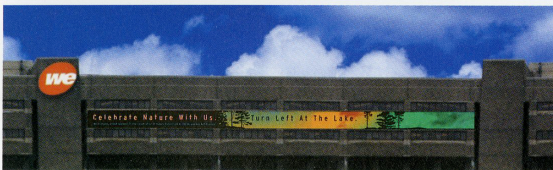
2 SATURDAY
2004 Grape Lakes Food and
Wine Festival
The Grand Tasting
6 p.m. 414-224-3852

CALENDAR KEY

- By reservation only.
Call 414-224-3200 for details.
- Free for Members.
- Free with general admission.
- Free for general public.
- Fee charged. Member discounts
offered for some events.
- Exhibition ticket required.

Celebration of Nature

After the spectacular success of *Leonardo da Vinci* and *the Splendor of Poland* in fall 2002, once again We Energies has partnered with the Milwaukee Art Museum to present two exceptional exhibitions in celebration of Wisconsin and nature, *Magnetic North: The Landscapes of Tom Uttech* and *Judy Pfaff—Gregory Conniff: Camera and Ink*. The "Celebration of Nature" at MAM is sponsored by We Energies and presents complementary views of the natural world through the eyes of three nationally known Wisconsin artists.



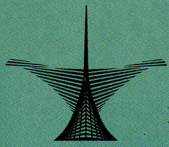
we energies
today, tomorrow, together.



From the Store

Shop the Magnetic North Store for exciting products featuring Tom Uttech images and gifts that are unique handcrafted reflections of the North Woods. This feature store is located in the exhibition, or shop online at www.mam.org. Info: 414-224-3210 or museumstore@mam.org.





MILWAUKEE ART MUSEUM
700 North Art Museum Drive Milwaukee, WI 53202

Non Profit Org.
US Postage Paid
Milwaukee, WI
Permit No. 374

This Month at MAM

OPENING THIS MONTH

Artists Interrogate:
Politics and War

SEPTEMBER 17–DECEMBER 26

Stories to Tell and Retell:
The Puppets of Ashley Bryan

OPENS SEPTEMBER 19

CONTINUING

Magnetic North
The Landscapes of Tom Uttech

THROUGH OCTOBER 3

LAST CHANCE

Byrdcliffe: An American Arts
and Crafts Colony

THROUGH SEPTEMBER 19

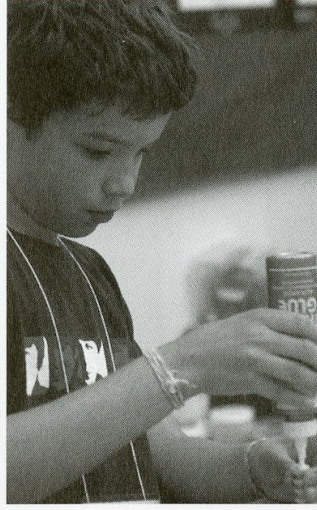
Currents 31: Robert Melee

THROUGH SEPTEMBER 19

Tom Uttech, *Waukeshu*, 2001. Oil on canvas. Lent by Barbara Howard, Evanston, Illinois.

MILWAUKEE ART MUSEUM

MAMstudio



FALL 2004

MILWAUKEE ART MUSEUM

Downtown Studio Art Classes

ADULTS (AGES 16 & UP)

Portraits Through Time

Melissa Courtney Bowles, Artist/Teacher
8 Thurs: Sept 16, 23, 30, Oct 7, 14, 21, 28, Nov 4
6:15–7:45 pm
Fee: \$125 MAM member/\$145 non-member

Painted Landscape Workshop

Melissa Courtney Bowles, Artist/Teacher
Sat: Sept 25
10:30 am–2:30 pm
Fee: \$40 MAM member/\$50 non-member

Drawing in the Galleries

Priscilla Wicks, Artist/Teacher
8 Thurs: Sept 23, 30, Oct 7, 14, 21, 28, Nov 4, 11
6:15–7:45 pm
Fee: \$125 MAM member/\$145 non-member

Oil Painting: Master's Techniques

Helena Ehlike, Artist/Teacher
8 Thurs: Oct 7, 14, 21, 28, Nov 4, 11, 18
(no class 11/25), Dec 2
12:30–3:00 pm OR 3:00–5:30 pm
Fee: \$150 MAM member/\$170 non-member

O'Keeffe Inspiration

Heather Eiden, Artist/Teacher
4 Sat: Oct 16, 23, 30, Nov 6
10:30 am–12:30 pm
Fee: \$80 MAM member/\$95 non-member

Art History in the Galleries: The Who, What, Why and How of Our Collection

Barbara Brown Lee, Chief Educator, MAM
4 Tues: Nov 2, 9, 16, 23
1:00–2:30 pm
Fee: \$60 MAM member/\$70 non-member

KIDS & FAMILIES

Mixing with the Masters

Judith Kahn, Artist/Teacher
4 Sat: Sept 11 (Folk Art), Oct 9 (Edgar Degas),
Nov 13 (Alexander Calder), Dec 11 (Marc Chagall).
10:30 am–12:00 pm
Ages 4–8 with an adult caregiver
Fee: \$15 MAM member/\$20 non-member per class

Partners in Art (new projects!)

Paula Christensen, Artist/Teacher
8 Weds: Sept 29, Oct 6, 13, 20, 27, Nov 3, 10, 17
10:30 am–12:00 pm
Ages 3–5 with an adult caregiver
Fee: \$125 MAM member/\$145 non-member

New! Partners in Art Sundays

Alissa Ewer, Artist/Teacher
8 Sun: Sept 19, 26, Oct 3, 10, 17, 24, 31, Nov 7.
1:00–2:30 pm
Ages 3–7 with an adult caregiver
Fee: \$125 MAM member/\$145 non-member

Drawing in the Galleries for Kids: Color

Sarah Sturtewagen & Sarah Andrews,
Artists/Teachers
8 Thurs: Sept 30, Oct 7, 14, 21, 28, Nov 4, 11, 18
4:30–6:00 pm
Ages 6–10 OR Ages 11–15
Fee: \$125 MAM member/\$145 non-member

Playful Puppets

Jane Moore, Artist/Teacher
October 16
10:30 am–12:30 pm
Ages: 3–6 with adult caregiver
OR
1:30–3:30 pm
Ages: 7–11 with or without adult caregiver
Fee: \$20 MAM member/\$25 non-member

Let's Make an American Masterpiece

Paula Christiansen, Artist/Teacher
3 Sat: Oct 23, 30, Nov 6
1:00–4:00 pm
Ages: 9–13
Fee: \$90 MAM member/\$110 non-member

Story Time in the Galleries

3 Mon: Oct 11, 25, Nov 8
2 Sat: Oct 23, Nov 20
10:30 am story time
All ages (5 years & under require an adult caregiver)
Fee: FREE with general museum admission!
No pre-registration necessary.

CLASS REGISTRATION

To register for classes at MAM's downtown studio, call 414-224-3826. To register for classes at MAM/West's Brookfield studio, call 262-781-9470 ext. 5023. Class fees include supplies, unless otherwise noted. MAM's downtown class fees include admission to the Museum's non-ticketed galleries on the day of each session. All registration closes five working days prior to class start date. If you cancel 24 hours prior to the first session of class, there is a cancellation fee of 50% of the price of the class. NO REFUNDS AFTER CLASS STARTS. Save on registration by becoming a Milwaukee Art Museum member!

GIFT CERTIFICATES

Studio art class gift certificates are now available to purchase. Call 414-224-3826 for details.

SCHOLARSHIPS

Scholarships are available for school-age students interested in pursuing art who are in need of financial assistance. Call 414-224-3834 for details.

CREATIVE ART BIRTHDAY PARTIES

With the Milwaukee Art Museum!
Call 414-224-3834 for details.

MAMstudio



Studio Art Classes & Activities

at the Sharon Lynne Wilson Center for the Arts Brookfield, WI

ADULTS (AGES 16 & UP)

Ceramics

Dave Cicero, Artist/Teacher

8 Wed: Sept 29, Oct 6, 13, 20, 27, Nov 3, 10, 17
6:30–8:30 pm

Fee: \$160 MAM member/\$190 non-member

Figure Drawing

8 Tues: Sept 28, Oct 5, 12, 19, 26, Nov 2, 9, 16
10:00–11:30 am

Fee: \$125 MAM member/\$145 non-member

Drawing & Painting—Still Lives

Alissa Ewer, Artist/Teacher

8 Thurs: Sept 30, Oct 7, 14, 21, 28, Nov 4, 11, 18
1:00–2:30 pm

Fee: \$125 MAM member/\$145 non-member

Landscape Painting Workshop

2 Sat: Sept 25 & Oct 2
10:00 am–4:00 pm

Fee: \$125 MAM member/\$145 non-member

Portrait Painting Workshop

Melissa Courtney Bowles, Artist/Teacher

2 Sat: Nov 6 & 13
10:00 am–4:00 pm

Fee: \$125 MAM member/\$145 non-member

Ceramics for Kids

Dave Cicero, Artist/Teacher

8 Wed: Sept 29, Oct 6, 13, 20, 27, Nov 3, 10, 17
4:30–6:00 pm Ages 11–15

OR

Jen Arpin, Artist/Teacher

8 Tues: Sept 28, Oct 5, 12, 19, 26, Nov 2, 9, 16
4:30–6:00 pm Ages 6–10

Fee: \$125 MAM member/\$145 non-member

Partners in Art I (new projects!)

Sara Sturtewagen

8 Wed: Sept 29, Oct 6, 13, 20, 27, Nov 3, 10, 17
10:00–11:00 am

Ages 3–5 with an adult caregiver

Fee: \$80 MAM member/\$95 non-member

Homeschool Art, Part 1: Drawing & Painting

Alissa Ewer, Artist/Teacher

8 Mon: Sept 27, Oct 4, 11, 18, 25, Nov 1, 8, 15
10:30 am–12:00 pm Ages 6–10

OR

1:00–2:30 pm Ages 11–15

Fee: \$125 MAM member/\$145 non-member

The Artist in You: A Fine Art Sampler

Jen Arpin, Artist/Teacher

8 Thurs: Sept 30, Oct 7, 14, 21, 28, Nov 4, 11, 18
4:30–6:00 pm Ages 6–10

OR

6:30–8:00 pm Ages 11–15

Fee: \$125 MAM member/\$145 non-member

Art Dolls for Families

Jane Moore, Artist/Teacher

Sat: Oct 23

1:00–4:00 pm

Ages 7–11 with an adult caregiver

Fee: \$45 MAM member/\$50 non-member