

MILWAUKEE ART INSTITUTE

BULLETIN

VOLUME 17

SEPTEMBER, 1944

NUMBER 4



Two views of the Carnegie Exhibition of Appreciation of the Arts



MILWAUKEE ART INSTITUTE • 772 NORTH JEFFERSON STREET • MILWAUKEE 2, WISCONSIN
Admission free at all times • Daily: 9 a. m. to 5 p. m. • Sundays: 2 to 6 p. m.

CARNEGIE EXHIBITION OF APPRECIATION OF THE ARTS

Continuing on view during September will be this unusual exhibit which analyzes for the layman in a clear and vivid way the elements of form, line, color and abstract and pictorial design. It utilizes diagrams, peepshow boxes and hundreds of carefully chosen reproductions of paintings and drawings to illustrate the principles it examines and simplifies. Planned and organized by the Cincinnati Museum of Art under a grant from the Carnegie Corporation, it has proved so successful that it has been duplicated, and a second copy of the exhibit is now touring the western museums. Amplifying the exhibit material will be a series of illustrated lectures which Polly Coan will give on September 19, 22, 26 and 29 at 4 o'clock. School classes and art clubs are planning to make use of the exhibit and talks, and it is hoped members of the Art Institute will avail themselves of the chance to do so also.

WILMANNS MEMORIAL PURCHASE EXHIBIT

The leading exhibit of the Art Institute fall season will be the Wilmanns Memorial Purchase Exhibit, a competitive juried exhibit for the artists of Wisconsin, Illinois, Michigan and Minnesota, from which the Art Institute will make purchases totalling \$1,000.00, the amount of the Wilmann's bequest. Word has already been received from over 400 artists of their intention to submit work in the competition. Exhibit dates are October 6th to November 12th, but artists are reminded that Saturday, September 2nd is the last day for return of entry cards, and that entries must be sent express, prepaid, to arrive at the Art Institute between September 11th and 20th. Local artists who will deliver their entries by hand are asked to leave them at F. H. Bresler Co., 729 N. Milwaukee Street, where they will be stored until the judging.

Blake-More Godwin, Director of the Toledo Museum of Art, Wilbur D. Peat, Director of the John Herron Art Institute at Indianapolis, and Frederic Taubes, of New York, who comprise the jury, will meet during September 23rd and 24th to choose the exhibit and award the prizes.

The exhibit will open with an evening reception for members of the Art Institute and the artists on October 6th — announcement of the Art Institute purchase prize awards will be made at that time. It is planned to circulate a portion of the exhibit to leading museums in the four states participating so that the best work will have a wide viewing, and so that artists elsewhere can measure their work against that of their local contemporaries.

UNIVERSITY OF WISCONSIN EXTENSION MUSIC APPRECIATION COURSE

The Art Institute has arranged with the University of Wisconsin Extension to offer this fall at the

Art Institute an Extension-conducted course in the history and appreciation of music. Mr. Milton Rusch, who is head of the Music Department at State Teachers' College, and conductor of the Young People's Orchestra, will conduct the course.

It will consist of 12 sessions, meeting on successive Thursday evenings at 8:00 P. M. from September 28th to Christmas. The course will aim to build, on the basis of the listener's full reactions to rhythm, melody, harmony, and tone-color, skills in active listening that will aid in understanding forms, styles and types of musical composition. The great periods of music and the most important composers will be studied, and music will be related to its historical and sociological backgrounds, and to the other arts. The lectures will be supplemented by recordings, analyses with aid of the piano, and informal discussion.

Members intending to take the course should register at the Milwaukee Art Institute between September 18th and 28th. The fee for a limited number of members will be \$3.75; that for non-members will be \$7.50.

THE SUMMER IN REVIEW

The months of July and August have been busy and interesting ones for the Art Institute.

The children's art classes were filled to a capacity 280 this summer and, under the very able and enthusiastic faculty, had a varied and profitable 8-weeks term. Many field trips were taken to parks and the zoo in search of new material, the sketches from which were later worked up into finished paintings. The teaching staff consisted of Gordon Borchardt, June Buchholz, Betsy Friebert, Fern Kohlmetz, and Myrtle Uehling.

The Men's and Women's Sketch Classes also met regularly, the former always out in the country on week-end trips. Robert Schellin was in charge of the Women's class while Robert von Neumann again instructed the Men's class.

The Three Group Shows on view in July, consisting of work of the Men's Sketch Club, the Seven Arts Society, and the Art Institute Women's Sketch Club were invited by Schusters' Third Street Store to a week's viewing there and were on exhibit from August 5th to 12th.

Through the cooperation of six music stores which generously loaned records, the Art Institute was able to offer free recorded concerts between 12 and 1 every week-day during July and August. The stores which so kindly provided the music were The Boston Store, Bradford's, The Broadway House of Music, Gimbel's, Helen Gunnis, and Schuster's, each supplying records for one day a week. The programs, selected by a group of musicians including Mr. and Mrs. Cyril Owen, Miss Alice Stone, and Mr. and Mrs. Jack Wilson, consisted of classical and semi-classical music and were held in the auditorium, where the Metropolitan-loaned paintings were on view. They seemed to fill a gap in Milwaukee's

summer musical program and were really enjoyed by the few who took advantage of them. An Allis-Chalmers welder, clerks, printers and salesgirls from the neighborhood shops came during their lunch-hour and all were most appreciative of the chance the concerts provided to relax in a peaceful atmosphere. Whether the plan of having such concerts intermittently during the winter is carried out depends on the public interest in such a program and its ability to take advantage of it.

MEN'S AND WOMEN'S SKETCH CLASSES

Encouraged by the interest shown in the Women's Sketch Class which met during the late winter, and its successor which met during the summer, the Art Institute has made plans for a larger and more permanent class during the coming winter. It will meet weekly from 7:30 to 9:30 on Friday evenings in the large gallery of the Institute, and will have as instructor Alfred Sessler. The emphasis will be on life drawing and the class will work from models. The charge for the October-February term will be \$10.00 to members and \$15.00 to non-members. Registrations for the class, which will meet for the first time on Friday, October 13th, are now being made.

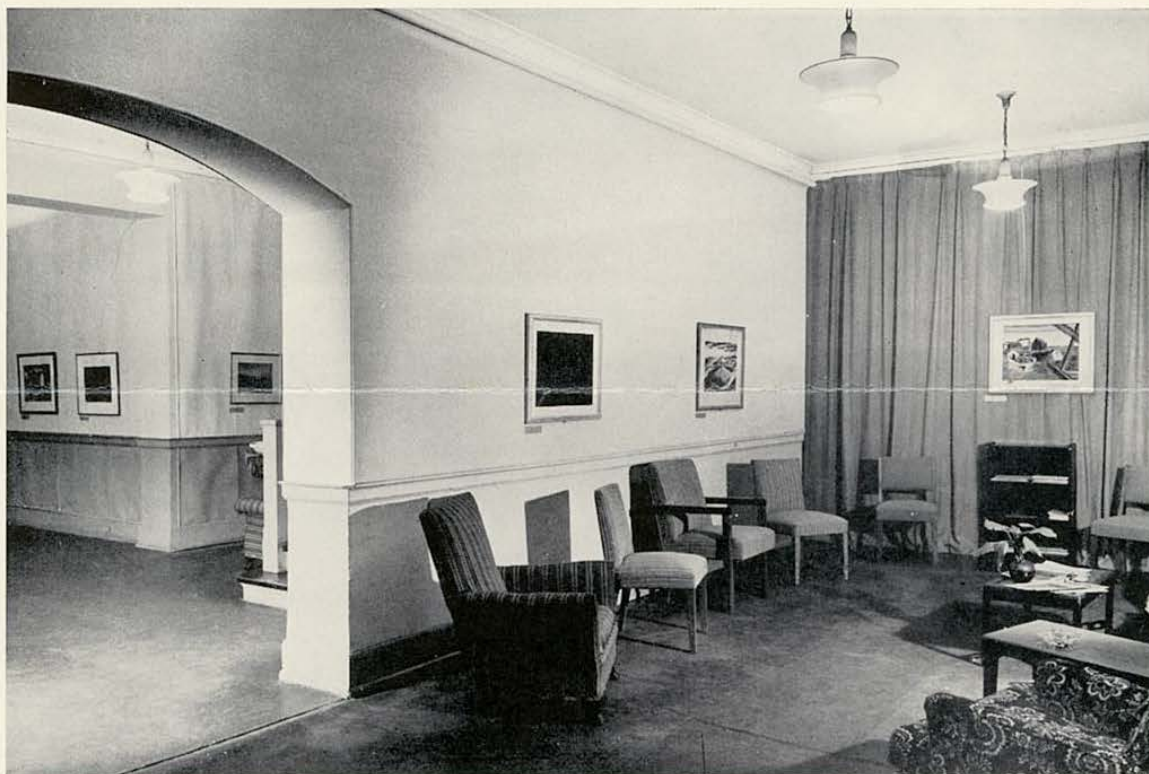
The Men's Sketch Class will again meet weekly at the Art Institute under Robert von Neumann, on Wednesday evenings, beginning October 11th. Those interested in joining this group, the oldest and largest of its sort in the country, may procure information from the Art Institute or Mr. John Balsom, West 4680.

CHILDREN'S WINTER ART CLASSES

Registration for the 1st term of the winter session of the children's art classes will take place at the Art Institute on Saturday morning, September 30th, at 9:30 a. m. The 14-week session will start the following week on October 7th, and continue through January, meeting weekly on Saturday mornings from 9:30 to 11:30. The classes are open to young people between the ages of seven and sixteen. Instruction will be offered in drawing and painting, clay modelling, and crafts, by a faculty of public school art teachers, headed by Gordon Borchardt, art supervisor.

A fee of \$5.00 will be charged children of non-members; children of members may attend free or on payment of a fee of \$2.50, depending upon the kind of membership they hold.

Each class will meet separately in the Art Insti-



Members' Lounge and Wisconsin Gallery

tute, or when weather permits, the drawing and painting classes will go on field trips to the parks nearby or the zoo or museum.

WISCONSIN GALLERY

The Wisconsin Gallery during September will show the work of six Milwaukee artists in an exhibition which is being continued from the summer. The gallery is primarily a sales gallery, all the pictures hung there are available for purchase at very reasonable prices. Gerhard Bakker is represented by watercolors of Bayfield and the West while Carol Brooks is showing pastels of Mexico. A varied group of oils by Morley Hicks treats scenes of Lake Superior and Gloucester, Massachusetts. Joseph Friebert's oils are characteristically rich and golden, while Josephine Schaefer's flower painting and Milwaukee scenes show her use of oil in thick brilliant color. Lowell Lee is seen in farm scenes of Wisconsin.

SEPTEMBER ACTIVITIES

September 1-October 1 — Carnegie Exhibition: Appreciation of the Arts
 September 2 — Last day for return of entry cards for Wilmanns Memorial Purchase Exhibit
 September 11-20 — Days for receiving Wilmanns exhibits at F. H. Bresler Company
 September 18-28 — Registration for University Extension Music Course
 September 19, 22, 26, 4:00 P. M. — Carnegie Exhibition: Illustrated lectures by Polly Coan

September 28, 8 P. M. — University Extension Music Course, Session I
 September 29, 4 P. M. — Carnegie Exhibition: Illustrated lecture by Polly Coan
 Saturday, September 30, 9:30 A. M. — Registration for Children's Winter Art Classes
 Thursdays, 12 P. M. — Weekly gallery tour, conducted by Polly Coan

OFFICERS OF THE CORPORATION

President Dr. William Monroe White
President Emeritus Samuel O. Buckner
Vice-President Dr. Carl W. Eberbach
Secretary Marion L. Burnham
Treasurer Edward F. Pritzlaff

Milwaukee Art Institute Trustees

Harry Bogner	*Edward F. Pritzlaff
George G. Brumder	Dr. Victor W. Purdy
*Dr. Carl W. Eberbach	Carl W. Schuchardt
*Eliot G. Fitch	Louis J. Selzer
†*Max E. Friedmann	*Dr. Wm. Monroe White
†*William C. Frye	†Robert W. Baird
†Finance Committee	*Executive Committee

Exhibition Committee

Harry Bogner, <i>Chairman</i>	
Dr. Albert J. Baer	Miss Elsa Ulbricht
Miss Emily Groom	Mrs. William D. Vogel
Miss Marjorie Logan	Robert von Neumann
Frazier D. MacIver	Mrs. Charles Zadok
Mrs. Louise Pabst	

ANY PERSON INTERESTED IN BECOMING A MEMBER OF THE ART INSTITUTE MAY DO SO BY COMMUNICATING WITH THE SECRETARY. FULL INFORMATION CONCERNING MEMBERSHIP PRIVILEGES WILL BE MAILED ON REQUEST. MARQUETTE 7631.

Director	*G. Burton Cumming
Acting Director	Polly Coan
Membership Secretary	Marion L. Burnham
Asst. to the Acting Director	Hazel G. Wegener

STAFF

Registrar	Pearl M. Greenbaum
Receptionist	Bernice D. Gaulke
Superintendent of Building	John Harting

*On leave of absence in the Armed Forces.