

MILWAUKEE ART MUSEUM

NEWS SEPTEMBER-OCTOBER, 2001



CHIHULY OVER VENICE
OPENS SEPTEMBER 14

DEAR MEMBERS

This fall the Milwaukee Art Museum will reach yet another extraordinary milestone. Not only will we open the remaining portion of the Quadracci Pavilion, but the Burke Brise Soleil, the moveable sunscreen that covers the Museum's glass-enclosed reception hall, will be installed. And our expansion will be complete.

On Sept. 14, the opening day of the exhibition *Cibuly Over Venice*, the Museum will open the main entrance, restaurant and parking garage. The Museum will also open the Reiman Pedestrian Bridge, which links the Museum's new main entrance to Wisconsin Avenue, connecting downtown Milwaukee with the city's lakefront.

The Burke Brise Soleil, unprecedented in American architecture and the signature element of the addition designed by Santiago Calatrava, will be complete by October along with the Cudahy Gardens.

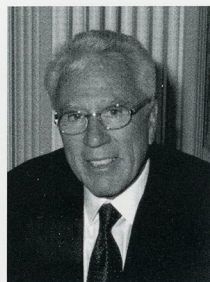
As the Chairman of the Building Committee, I've been privileged to watch this building come out of the ground and take shape. Now as the new president of the Milwaukee Art Museum Board of Trustees, I look forward to participating in the remaining progress of this breath-taking addition that we have built for the Museum and the entire community.

Outstanding support from donors has made this project possible. Since the capital campaign began in 1996, 23 contributors made gifts of \$1 million or more. More than 2,400 gifts from individuals, foundations and corporations raised total contributions to \$83 million. In the new Campaign for Completion, we are raising the remaining \$17 million of the \$100 million expansion goal by year end. We are grateful to the donors who have stepped forward to increase their initial contribution or who have made a new gift.

I would like to welcome the nearly 6,600 new members who have joined the Milwaukee Art Museum this year in anticipation of the opening of the amazing addition, the renovated galleries and the upcoming exhibitions. I hope you will visit often.



Donald Baumgartner
President, Board of Trustees



BOARD OF TRUSTEES

Donald W. Baumgartner
President
Frank J. Pelisek
Chairman, Past President
Robert A. Wagner
Vice President, Acquisitions
Mary Ann LaBahn
Vice President, Exhibitions
Stacy G. Terris
Vice President, Friends of Art President
Michael A. Hatfield
Treasurer
Marianne Lubar
Secretary
Frederic G. Friedman
Assistant Secretary and Legal Counsel

Christopher S. Abele
Sheila A. Aldrich*
Terry W. Anderson
Kathleen S. Arciszewski*
Andrea B. Bryant
Margaret Chester
Wesley A. Coleman
Elaine Davis
Sallie O. Davis
Ricardo Diaz
Mark G. Doll
Richard J. Glaisner
Judith A. Hansen
Terry A. Hueneke
Phyllis Huffman
Judy Jorgensen
Frederick G. Luber
Joan Marcus
James W. Nellen, II
Anthony J. Petullo
Betty Quadracci
Roy Reiman
Sandra Robinson
Allen L. Samson
Dorothy Nelle Sanders
Jim Schloemer
Justin Segel
Suzanne L. Selig
Pamela W. Shovers
David A. Straz, Jr.
Allen M. Taylor
W. Kent Velde
Thomas M. Wamser

Auxiliary Spokespersons
JoAnn Villavicencio
President, Collectors' Corner

Mary Terese Duffy
President, Garden Club

Ellen Glaisner
Chair, Docents

Administration
Russell Bowman
Director

Christopher Goldsmith
Executive Director

*Milwaukee County Supervisor

FEATURED EXHIBITION



Dale Chihuly, *Isola di San Giacomo in Palude Chandelier*, 1996. Courtesy, Chihuly Studio.
Photo: Russell Johnson.

GLASS FEST SATURDAY, OCT. 27

Panel Discussion: "Italian Techniques in American Studio Glass." Featured artists: Giles Bettison, Dante Marioni, Bill Gudenrath and Stephen Powell. Moderated by Tina Oldknow, curator of Modern Glass at the Corning Museum of Glass. Sponsored by the Art Alliance for Contemporary Glass. \$10 fee for panel discussion. 10 a.m.

Glass Blowing Demonstrations on the South Terrace by artist Ché Rhodes, assistant professor and head of the Glass Program at Southern Illinois University at Carbondale. Flameworking by Ellie Burke. Family art projects, tours and Dale Chihuly videos. Free with regular Museum admission. *Chihuly Over Venice* tickets not included. 1-5 p.m.

CHIHULY OVER VENICE

Baker/Rowland Exhibition Galleries

Sponsored by Marshall & Ilsley Corporation
and Michael Best & Friedrich LLP

The Milwaukee Art Museum will display the stunning exhibition *Chihuly Over Venice*, Sept. 14 – Nov. 11, 2001. The exhibition comprises more than a dozen artworks from Dale Chihuly's *Chandelier* series and numerous works on paper. After having been installed over the canals, gardens and piazzas in Venice, Italy, the *Chandeliers* will now hang in the new addition designed by architect Santiago Calatrava.

Chihuly will speak opening night at 6:15 p.m. in the Lubar Auditorium. Because seating is limited, this lecture will cost \$10 per person. To order lecture tickets, call 1-866-MAM-1323 starting Aug. 27. Exhibition admission is included with lecture ticket for members only.

Compared to fields of colorful butterflies, enormous feather boas and exotic fruit, the Chihuly *Chandeliers* will fill the Museum with splashes of color and light. Each chandelier is assembled around a cage-like armature, which is hidden from view by the protruding glass forms. Also on view will be a number of Chihuly's colorful acrylic drawings. Chihuly uses these drawings to communicate his thoughts about shape, color and surface treatment to his team.

The *Chihuly Over Venice* project was conceived as a cultural collaboration between teams of glassblowers from different countries with great glass-making traditions. The *Chandeliers* began to take their shape when Chihuly started making sketches in February 1994. They were blown by Chihuly and his American team in collaboration with local artisans in five countries: the United States, Finland, Ireland, Mexico and Italy. Each *Chandelier* reflects aspects of the glassmaking traditions of the country where it was made.

In September 1996, the *Chandeliers* were hung over the canals, gardens and piazzas of Venice. The site-specific installation in the Milwaukee Art Museum will be a unique experience for visitors. Each sculpture is comprised of hundreds of parts, assembled in many different ways in response to the space surrounding them. The *Chandeliers* never appear the same way twice.

This exhibition is organized by Chihuly Studio and curated at the Milwaukee Art Museum by Brian Ferriso, senior director of curatorial affairs with Audrey Mann, Chihuly programming consultant.

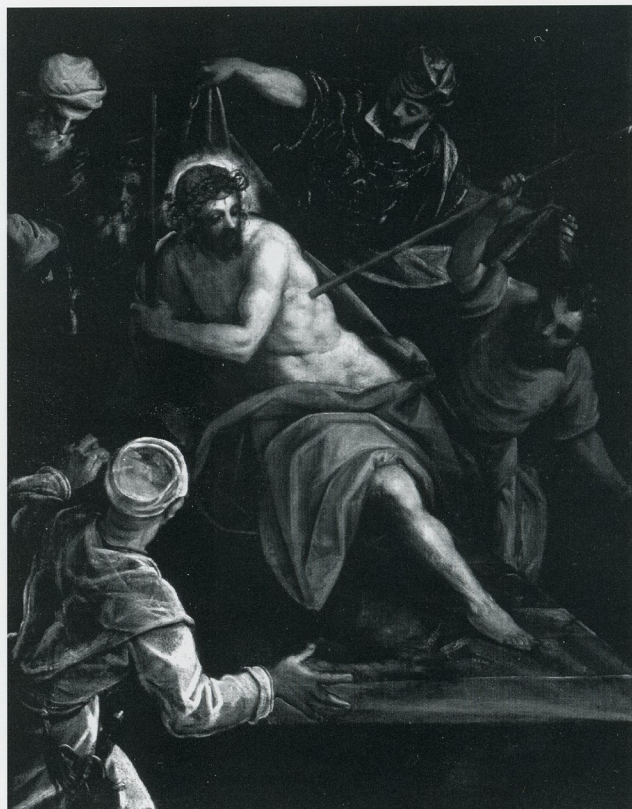
EXHIBITIONS

VENETIAN PAINTINGS FROM THE COLLECTION OF THE SARAH CAMPBELL BLAFFER FOUNDATION

September 14 – November 25, 2001

North Exhibition Gallery

Venetian Paintings from the Collection of the Sarah Campbell Blaffer Foundation celebrates the extraordinary artistic culture that emerged in Venice between the 16th and 18th centuries. The 14 paintings specially selected for this exhibition represent the unique stylistic and thematic character of Venetian art. In contrast to Central Italian artists who emphasized drawing, Venetian artists preferred coloring in their compositions. Venetian paintings are especially noted for their soft, atmospheric effects of light, compositions based on color rather than design, and an increasingly vivacious and sensuous application of paint. Organized by the Milwaukee Art Museum and the Sarah Campbell Blaffer Foundation. Co-curated by Laurie Winters, curator of earlier European art, and James Clifton, director, the Sarah Campbell Blaffer Foundation.



Tintoretto (Jacopo Robusti), *The Mocking of Christ*, ca. 1590. Oil on canvas. Loan, Sarah Campbell Blaffer Foundation.

RAY K. METZKER: LANDSCAPES

September 14 – December 30, 2001

Photography Gallery

Ray K. Metzker: Landscapes is an exhibition comprising of more than 60 prints from a remarkable body of photographs created between 1985 and 1998. During an autumn trip to Tuscany in 1985, Ray K. Metzker began a series of landscapes that would occupy him for the next decade. Continuing his exploration of landscape into the early 1990s, the artist traveled to locations as diverse as Colorado, Wisconsin, Turkey and France. His landscapes gradually became more complex as Metzker began to blur the distinction between subject and background. His work is well represented in museums and public collections both in the United States and abroad. A 168-page catalogue published by *Aperture 2* will accompany this exhibition. Curated at MAM by Tom Bamberger, adjunct curator of photography.



Ray K. Metzker, *Tuscany*, 1985. Photograph. Courtesy, Laurence Miller Gallery, New York.



16th Century Border Ware Pots
from the Surrey-Hampshire region of England.
© Gavin Ashworth.

IF THESE POTS COULD TALK ...
COLLECTING 2,000 YEARS OF BRITISH POTTERY
October 5 – January 20, 2002 (new dates)
Decorative Arts Gallery

If These Pots Could Talk ... spans 2,000 years of British pottery from the time of the ancient Gauls to the early 20th century. Each pot, bowl or dish has been selected for its role in the lives of those who created and lived with them. Of particular interest are the wealth of objects from the 16th century, a time when Dutch, French, German, Italian and Spanish pottery crossed the English Channel, inspiring a renaissance in British ceramic design and production. Organized by the Milwaukee Art Museum in collaboration with the Chipstone Foundation. Guest curated by Noël Hume, former Resident Archeologist at Colonial Williamsburg.



Elizabeth Catlett, *Malcolm X Speaks for Us*
(artist's proof), 1969. Color linocut.
Collection of the Hampton University Museum.
© Elizabeth Catlett/licensed by VAGA,
New York, NY.

ELIZABETH CATLETT: WORKS ON PAPER 1944 – 1992
October 26 – January 13, 2002
Print and Drawing Gallery

Elizabeth Catlett: Works on Paper 1944–1992 offers a comprehensive view of one of America's most distinctive printmakers. Catlett has always focused her prints on issues of race and ethnicity as well as on the lives of black and Hispanic women. From lithographs and linocuts produced at the Popular Graphics Workshop in Mexico City in the 1940s, 50s and 60s to screenprints and color lithographs produced into the 1990s, Catlett has consistently regarded prints as a democratic medium. The exhibition will showcase approximately 50 works from the repository of Catlett's works on paper at Hampton University in Virginia. Organized by Hampton University Museum. Curated at MAM by Sarah Kirk, curatorial assistant of prints, drawings and photographs.

Also on view:
FROM GENERATION TO GENERATION: MILTON ROGOVIN
PHOTOGRAPHS

May 4 – August 4, 2002
Suzanne and Richard Pieper Family Education Gallery
Sponsored by Rockwell.

VISIONES: LATIN AMERICAN ART FROM THE PERMANENT COLLECTION
July 13 – October 7, 2001
Print and Drawing Gallery

SEPTEMBER	10 MONDAY Golf Fore! Art Open, Registration and Lunch, 11 a.m.; Shotgun Start, Noon Chenequa Country Club, 6250 N. Highway 83, Hartland, Wis. Join MAM/West as we raise greens for MAM programs in Waukesha County. Golfers of all abilities are welcome at this event. Hole and foursome sponsorships are still available.	11 TUESDAY Gallery Talk – <i>If These Pots Could Talk... Collecting 2,000 Years of British Pottery</i> , 1:30 p.m.	13 THURSDAY Member Preview Day – <i>Chihuly Over Venice</i> , Noon – 9 p.m. Only Members showing a current membership card will be admitted to the preview. Lecture – Ana Maria Reyes, 6:15 p.m. Art historian Ana Maria Reyes, Ph.D. candidate at the University of Chicago, speaks – in conjunction with the exhibition <i>Visiones: Latin American Art from the Permanent Collection</i> – on Neofiguration in Latin American art of the 1960s.		14 FRIDAY Member Preview Day – <i>Chihuly Over Venice</i> , 10 a.m. – 5 p.m. Only Members showing a current membership card will be admitted to preview. Exhibition Opening – <i>Chihuly Over Venice</i> , 5 p.m. Lecture and Book Signing – Dale Chihuly, 6:15 p.m. Sponsored by the Business Journal.	
	15 SATURDAY Just For Teachers Workshop, 8 a.m. – Noon Covers <i>From Generation to Generation: Milton Rogovin Photographs and Chihuly Over Venice</i> exhibitions. Photographer Milton Rogovin to speak. \$40. Sponsored by Rockwell. Present Music Lecture and Concert Reception, 6 – 9 p.m. Composer Kamran Ince to speak. Concert begins at 7 p.m.	16 SUNDAY Present Music Lecture and Concert, 6 – 9 p.m. Tickets: 414-271-0711. DATE CHANGE SEE PAGE 8.	18 TUESDAY Gallery Talk – <i>Visiones: Latin American Art</i> , 1:30 p.m.	19 WEDNESDAY Grape Lakes – Grape Stomp, 5K twilight run/walk. Information: Grape Line, 414-224-3852.	20 THURSDAY Lecture – Sculptor Magdalena Abakanowicz – “About Imagination,” 5:30 p.m. Reception, 6:15 p.m. Lecture The Woman’s Club of Wisconsin commissioned her to create a sculpture to be installed on Kilbourn Avenue in front of the Club’s landmark building. Free to MAM members; \$6 non-members. Sponsored by MAM with the Woman’s Club of Wisconsin. Grape Lakes – The Wine Auction and Tasting. Tasting – 5:30 p.m. Auction – 7 p.m. Rare and exciting wines auctioned by Sotheby’s. \$75 per person. Information and reservation: Grape Line, 414-224-3852.	
21 FRIDAY Grape Lakes – The Wine and Dine Gourmet Dinner, 6 p.m. Milwaukee’s finest chefs are brought together for an evening of outstanding food and wines. \$150 per person. Information and reservation: Grape Line, 414-224-3852.	29 SATURDAY Lecture and Book Signing – Leigh and Leslie Keno, 1:30 p.m. and 5 p.m. Leigh and Leslie Keno, featured on the most popular show on PBS and authors of a new book, “Hidden Treasures: Searching for Masterpieces of American Furniture.” 1:30 p.m.: \$15 members, \$25 non-members; 5 p.m.: \$40 members, \$50 non-members (event includes reception). This event is sponsored by the Fine Arts Society and American Heritage Society. Information: 414-224-3247.	OCTOBER	2 TUESDAY Gallery Talk – <i>Chihuly Over Venice</i> , 1:30 p.m. Chihuly exhibition ticket required.	3 WEDNESDAY Lecture – <i>Chihuly Over Venice</i> , 5:30 p.m., Waukesha County Technical College, Conference Center, 800 Main St., Pewaukee. MAM’s Brian Ferriso, senior director of curatorial affairs, lectures on the special exhibition.	5 FRIDAY Lecture – James Clifton, 5:30 p.m., Reception, 6:15 p.m. James Clifton, director of the Sarah Campbell Blaffer Foundation, discusses the style and character of Venetian painting. Sponsored by the Layton Lecture Fund	6 SATURDAY Symposium – <i>If These Pots Could Talk...</i> , 8:30 a.m. – 5 p.m. An examination of the exhibition, including a film screening, lectures, demonstrations, lunch and a gallery tour. Speakers include Noel Hume, archeology scholar, David Gaimster, The British Museum, Rob Hunter and Michelle Erickson, historic pottery experts.
7 SUNDAY Family Art Fest – The Magic in Art, 1 – 4 p.m., Waukesha County Exposition Center, 1000 Northview Drive, Waukesha. Marvel at magician Bruce Dicker then practice on your own as you create art using fool-the-eye art techniques. Family Art Fests are made possible through a generous grant from Target Stores in Delafield, Menomonee Falls and Waukesha.	11 THURSDAY Lecture – Martin Blank, 6:15 p.m. Independent artist and <i>Chihuly Over Venice</i> project team leader Martin Blank describes the multinational process in creating the <i>Chandeliers</i> .		12 FRIDAY Cudahy Gardens Opening Night, 5 p.m. Free outdoor party as Michael J. Cudahy turns on the water fountains and opens the gardens.	13 SATURDAY The Gala, 6 – 11:30 p.m., Grand Reception Hall Supporters of the Museum gather for a gala celebration marking the completion of our expansion and to raise funds for educational programs.	14 SUNDAY Building Dedication, Noon – 5 p.m. The Burke Brise Soleil spreads its wings as MAM celebrates with the community the official dedication of the Quadracci Pavilion. Free admission to the Museum including the <i>Chihuly Over Venice</i> exhibition.	16 TUESDAY Gallery Talk – <i>Venetian Paintings from the Sarah Campbell Blaffer Foundation</i> , 1:30 p.m.
18 THURSDAY Lecture and Book Signing – “A Bouquet from the Met,” 6:30 p.m., Grand Reception Hall Chris Gifox, Manager of Special Events at the Metropolitan Museum of Art, lectures and demonstrates. Fund-raiser for the Museum. Sponsored by the Garden Club, a MAM support group. Cost is \$42.50 per person.	19 FRIDAY Gallery Night, 5:30 p.m. General admission is free. (Exhibition tickets not included.) At 5:45 p.m. MAM’s Brian Ferriso briefly lectures on the Chihuly exhibition.	21 SUNDAY Day of the Dead, Noon – 4 p.m. Celebrate this ancient Mexican holiday. Create colorful flowers, cavorting skeletons and other unique tributes to departed souls. Guest artist Jose Chavez demonstrates the traditional Mexican crafts of cut paper banners and sugar skulls. Family Sundays are made possible through a grant from Midwest Express Airlines.	24 WEDNESDAY Lecture — David Salle, 5:30 p.m. Reception, 6:15 p.m. Lecture Noted contemporary artist lectures. Sponsored by the Contemporary Arts Society, a MAM support group.	26 FRIDAY Lecture — Tina Oldknow, 6:15 p.m. Tina Oldknow, curator of modern glass at the Corning Museum of Glass, lectures on “A Secret History of Italian Glass” in conjunction with the <i>Chihuly Over Venice</i> exhibition. Sponsored by the Layton Lecture Fund.	27 SATURDAY Glass Fest. See page 2.	30 TUESDAY Gallery Talk – <i>Chihuly Over Venice</i> , 1:30 p.m. Chihuly exhibition ticket required.

5

For more event information, go to www.mam.org. The MAM website is sponsored by Wisconsin Electric's Energy for Tomorrow Program.

6

PERMANENT COLLECTION

SURPRISES IN THE COLLECTION

During the past two years the curatorial department has looked and sounded a little bit like the PBS popular *Antiques Road Show* as Laurie Winters, curator of earlier European art, worked with more than two dozen scholars and conservators from around the country and Europe in reevaluating the European collections under her direction. The aim of the review was to better understand the works in light of the reinstallation of the permanent collection.

Winters and consultants — often sporting white gloves and surrounded by piles of books — turned up more than a few surprises in the dark recesses of the Museum's vaults. Notable among them was the discovery that the Museum possessed a truly outstanding collection of Sèvres porcelain. Research on the collection revealed that two stunning rose plates, from the dinner service of Louis XV, and a brilliant green chestnut bowl, actually rank among the finest pieces in the world. Porcelain expert Ghenette Zelleke of The Art Institute of Chicago literally jumped with excitement when she first examined the chestnut bowl.

The review also led to the reattribution of a number of paintings. A Dutch painting of a church interior once given to Berckheyde has now been firmly identified as a late work of Hendrick van Vliet. Honthorst's raucous *Allegory of Gluttony* has been reattributed to his follower Joachim van Sandrart. Drouais' charming portrait of a little girl is actually a rare work by his niece, Catherine Lususier, one of the few women painters of the 18th century. And a signed Corot landscape — once thought to be too good to be true — has been firmly authenticated. All of these works are currently on view in the European galleries.

Intent on identifying the artist of an exceptional $\frac{3}{4}$ -length portrait of a man that has hung in the galleries for more than a decade, Winters followed one dead end after another until a New York dealer remembered seeing something of similar style in a private collection in Germany. The artist was finally identified as Pieter Claesz Soutman, a follower of Rubens — and also discovered was a previously unknown paired portrait of the sitter's wife in a private collection in Hartford, Conn. The portrait is now a promised gift to the Museum. Further investigation uncovered their identities and the date of their marriage — 1626 — the same date as the portraits.



Laurie Winters, curator of earlier European art, with the two reunited paintings: Pieter Claesz Soutman, *Alexander van der Capellen, Heer van de Boedelhog and his wife, Mervelt Emilia van Zuylen van Nyevelt*, 1626. Oil on panel. MAM, Gift of Anita Sculthorpe memory of Ferdinand Hinrichs M1992.269 and Lent by a Private Collection.

MEMBERSHIP

VISITOR INFORMATION

ACCESS TO MILWAUKEE ART MUSEUM

Starting Sept. 14, visitors may enter the Museum using the new, main entrance located under the pedestrian bridge. Patrons may come into the building at street level or from the pedestrian bridge which originates at O'Donnell Park. From the bridge level guests may take the interior elevator to any level or the exterior stairs to the main entrance.

PARKING

Parking is available in the Museum's new underground parking structure — entrance located just north of the intersection of Art Museum Drive and Michigan Street. Parking is also available in the O'Donnell Park Parking Structure or the War Memorial Parking Lot just north of the Museum. Signs in each parking lot will direct guests to the Museum.

MUSEUM STORE



Photo: Russell Johnson

Chihuly Over Venice, the exhibition catalog, is a full-color record of the installations as they were assembled along the Venetian waterways. The MAM store will offer several other Chihuly books and videos, each exploring an aspect of Chihuly's talent for making a highly complex art form appear simple and natural. The book selection ranges from "The Essential Dale Chihuly" (Member's Price \$11.66) which explores the origins of Chihuly's motivation and creativity, to "Chihuly Projects" (Member's Price \$67.50), a fascinating retrospective that profiles 33 installations. Additionally, the museum store will feature several hand blown Chihuly Studio Editions.

MEMBER PREVIEW DAYS

Preview *Chihuly Over Venice* at Member Preview Days on Sept. 13 from noon to 9 p.m. and Sept. 14 from 10 a.m. to 5 p.m. before the exhibition opens to the public. Only Members showing a current membership card will be admitted to the preview.

MEMBER SPECIAL EXHIBITION TICKET BENEFITS

Members also receive FREE tickets to the exhibition *Chihuly Over Venice*, sponsored by Marshall & Ilsley Corporation and Michael Best & Friedrich LLP after Member Preview Days.

PFISTER HOTEL: THE OFFICIAL HOTEL OF MAM

The Pfister Hotel, located at 424 E. Wisconsin Ave., is proud to offer MAM Members a special rate of \$139/night for a single or double room on reservations through Dec. 31, 2001. Rates are based on availability. Call 1-800-558-8222 for reservations. Be sure to mention that you are a MAM Member to receive this special rate. For more information about the Pfister, visit www.thepfisterhotel.com.

MEMBER DISCOUNTS FOR PRESENT MUSIC CONCERT

Present Music, Milwaukee's acclaimed music group, celebrates its 20th season with spectacular concerts and a party at the Milwaukee Art Museum on Sunday, Oct. 28 and Monday, Oct. 29, 2001. The featured work will be the much anticipated World Premiere of *Flight Box* by Kamran Ince, commissioned by John Shannon and Jan Serr to commemorate the opening of the Quadracci Pavilion.

The concerts begin with a Fanfare on the plaza of O'Donnell Park and will include a musical procession across the Reiman Bridge. Featured composer Kamran Ince will also give a talk before each concert.

Tickets to the concert and party on Sunday, Oct. 28 for MAM members are \$30 and \$20. Tickets to the concert on Monday, Oct. 29 for MAM members are \$20 and \$10. To purchase tickets in advance call 414-271-0711. MAM Members also receive reduced rates on season tickets series.

For inquiries about your MAM Membership and its benefits call the Membership Hotline: 414-224-3284.

DEVELOPMENT

BETTY AND HARRY QUADRACCI

A love of art and passion for education, combined with a strong desire to give back to the community, have led Harry and Betty Quadracci to join the Milwaukee Art Museum's most prominent leaders and contributors. Their extraordinarily generous challenge gift of \$10 million to the Calatrava expansion is recognized in the naming of the Quadracci Pavilion.

Harry is the founder and president of Quad/Graphics, Inc., an international printing enterprise with headquarters in Pewaukee, Wis. Betty is the publisher of Milwaukee Magazine and president of Quad/Creative, a graphic design firm. The Quadraccis have four adult children and three grandchildren.

Betty, a current member of MAM's board of trustees, led the Marketing Committee for many years. Her dynamic leadership helped to spur the phenomenal growth of the Museum's membership from 3,200 to 17,000 today. With her background as an educator, she initiated Milwaukee Magazine's valued sponsorship of MAM's Scholastic Art Awards program in 1986.

The Quadracci business of printing is "an art unto itself," comments Barbara Brown Lee, longtime friend and MAM chief educator. She also points to the magnificent collection of original works on paper at Quad/Graphics facilities throughout the world and especially the Quadraccis' desire to share their knowledge and love of art with their employees. Each year Quad/Graphics sponsors a Family Day at MAM for its employees, usually during the Scholastic Awards competition. The first year 50 people attended; now 9,000 invitations are sent, and last year 2,500 children and adults participated. With the many young employees at Quad/Graphics, this festive event features tours, activities for children and parents, food and music.

Deeply involved in the expansion project, both Quadraccis served on the Architect Selection Committee. Harry has been a member of the Building Committee, which has been meeting since 1995 to oversee the project, and Betty has been a member of the Capital Campaign Committee. Betty and Harry are chairs of the Inaugural Committee, responsible for planning all of the opening activities of the new Milwaukee Art Museum, and, along with Donald and Donna Baumgartner, are co-chairs of the committee planning the Oct. 13 gala. Betty animatedly shares her vision of the Milwaukee Art Museum's future as "a gathering place for the entire community, with outstanding education programs expanding the worlds of children, youth and adults and a collection that shines as a regional jewel."



Harry and Betty Quadracci

MUSEUM THANKS MILWAUKEE INSTITUTIONS FOR THEIR SUPPORT
The exhibition *Chihuly Over Venice* is sponsored by the Marshall & Ilsley Corporation and Michael Best & Friedrich LLP. Jack Pelisek, MAM chairman and senior partner at Michael Best said, "It is fitting that we open the completed glass covered Grand Reception Hall of the Quadracci Pavilion as we highlight this world famous glass artist with Wisconsin training." Mike Hatfield, MAM trustee and senior vice president at Marshall and Ilsley Corporation added, "The energy and creativity in Dale Chihuly's work reflects the new spirit of Milwaukee."



Judy Jorgensen

MASTERPIECE SPONSORS

The Milwaukee Art Museum thanks our generous supporters who are making our opening year exhibitions and programming possible.

Ameritech Foundation
The Miller Brewing Company and
The Philip Morris Companies
Northwestern Mutual Foundation

Briggs and Stratton Corporation Foundation
The Nathan Cummings Foundation
Friends of Art
Marshall Field's Project Imagine
Marshall & Ilsley Corporation
Michael Best & Friedrich LLP
Midwest Express Airlines
Milwaukee Journal Sentinel
Rockwell
Smooth Jazz 93.3 WJZI
Spirit of Milwaukee

PUBLIC FUNDING SOURCES

The Milwaukee Art Museum is supported in part by a grant from the Wisconsin Arts Board with funds from the State of Wisconsin. The continuing support of Milwaukee County makes this facility available under the auspices of the War Memorial Corporation to serve the living in memory of our war dead. Additional support is provided by the National Endowment for the Arts and the Milwaukee Arts Board.

2002 CONTRIBUTING MEMBERSHIP CAMPAIGN

Judy Jorgensen, MAM Trustee and volunteer, is leading the 2002 Contributing Membership Campaign. Jorgensen recently completed a long career in education which included teaching English at the middle school, high school and college levels. In January of 2001, she retired as Dean of Academic Support at Waukesha County Technical College. She continues to be an active supporter of many community organizations in Milwaukee and Waukesha counties. We thank MAM Trustee, Justin Segel, for chairing the campaign for the past two years. His time and insight were invaluable to the campaign's continued success.

Judy and the members of the Milwaukee Art Museum Campaign Cabinet will send annual request letters to all MAM donors this fall. Please continue your support of MAM's education programs, exhibitions and collection maintenance with a contribution to the 2002 Contributing Membership Campaign. For more information, please call Patrick Rath at 414-224-3254.

MINI-DOCUMENTARY ON MAM EXPANSION PROJECT PREMIERS THIS FALL

The Milwaukee Art Museum has commissioned a mini-documentary to tell the story behind the expansion project. The video will premier in the fall and will be shown continuously in the auditorium. Planned to educate viewers about the design and construction process, it will also celebrate the innovation and creativity of those who made the expansion possible. C. G. Schmidt Inc., Graef Anhalt Schloemer & Associates and Kahler Slater are the sponsors of this production.

ART MUSEUM AND MILWAUKEE SYMPHONY ORCHESTRA COLLABORATE ON EVENT AND PROGRAMS

Join your friends for an inspired evening on Saturday, December 1, 2001. At 5 p.m. tour the new Quadracci Pavilion, enjoy a buffet dinner and meet composer Philip Glass. After dinner you will be transported to the Marcus Center for the Performing Arts to hear the world premier of Philip Glass' *Dancissimo*, inspired by the Quadracci Pavilion and played by the Milwaukee Symphony Orchestra.

Tickets for the event are \$100 per person; Symphony tickets must be purchased separately. Proceeds will support joint educational programs between the Symphony and the Museum. Sponsors are Richard and Diane Fisher, the Mary L. Nohl Fund and the Halbert and Alice Kadish Fund of the Greater Milwaukee Foundation, the Bert L. and Patricia S. Steigleder Charitable Trust, and Ziegler.

Reservations are required. Information: Lucia Petrie, 224-3250.

ACQUISITION



Portable Iconostasis, mid-16th century. Tempera on panel. MAM, Gift of John E. Sinsky.

A large, brilliantly colored *Portable Iconostasis*, dating from the mid-16th century, is one of the highlights of artworks donated to the Milwaukee Art Museum on the occasion of the Calatrava addition. Icons are two-dimensional religious paintings, usually painted on wood in the Byzantine style in which the figures are elongated and shown as surface patterning. The 6½-foot wide, 15-panel icon titled *Portable Iconostasis* seen here is a moveable version of the altar screen used in churches to divide the nave from the sanctuary, thereby separating the human and divine realms. The large center panel of the Enthroned Christ is surrounded by depictions of Old Testament Prophets, Saints, and the so-called "Holy Days" illustrating the events of the New Testament. This exceptionally rare icon and three smaller ones from the same donation are currently on view in the Southern Renaissance Galleries.

MILWAUKEE ART MUSEUM
700 N. Art Museum Drive
Milwaukee, WI 53202
www.mam.org
Museum Offices 414-224-3200
Members Hotline 414-224-3284
Information Line 414-224-3220
MAM/West 414-827-0444

HOURS

Tuesday, Wednesday, Saturday
10 a.m. to 5 p.m.
Thursday Noon to 9 p.m. (Supported
by Greater Milwaukee Foundation.)
Friday 10 a.m. to 9 p.m.
Sunday Noon to 5 p.m.

ADMISSION

Members receive free general admission
to the Museum.
Non-member adults \$6, Seniors and
Students \$4
Children under 12 free

SPECIAL EXHIBITIONS

Members receive free previews before
exhibition opens to public and at least
two free tickets after opening.
Non-members \$6 (plus general admission)
Children under 12 free
All tickets excluding previews are timed.
Order online at www.museumtix.com,
call 1-866-MAM-1323 toll free or visit the
Milwaukee Art Museum.

GROUP VISITS

Admission arrangements may be made
for adult groups of ten or more by calling
414-224-3840. For school group tours,
call 414-224-3825.

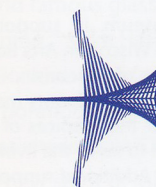
ACCESS INFORMATION

The Milwaukee Art Museum is wheelchair
and stroller accessible.

PARKING

Underground parking garage opening
Sept. 14, 2001.
West of Museum at O'Donnell Park.
North of Museum in War Memorial
parking lot.

Non Profit Org.
US Postage Paid
Milw, WI
Permit No. 374



MILWAUKEE ART MUSEUM

700 N. Art Museum Drive

Milwaukee, WI 53202